

LEGEND

- DECIDUOUS TREE
- MULTI-STEM TREE
- CONIFEROUS TREE
- SHRUBS & PERENNIALS
- SODDED AREA
- SEEDED AREA

BASE INFORMATION OBTAINED ELECTRONICALLY FROM 2LS DESIGN (JOB NO. 2020-14; TEL.647-456-2828)

no.	date	version	by
5.	MAR 19 2024	ISSUED FOR SUBMISSION	LE /E/K
4.	DEC 5 2023	ISSUED FOR SUBMISSION	LE /E/K
3.	OCT 12 2023	ISSUED FOR SUBMISSION	LE /E/K
2.	AUG 1 2023	ISSUED FOR SUBMISSION	LE /E/K
1.	DEC 5 2022	ISSUED FOR SUBMISSION	KM /E/K
0.	OCT.22 2021	ISSUED FOR CLIENT REVIEW	NH

CONCRETE UNIT PAVEMENT - TYPE 'A' (A)
 MANUFACTURE: UNILOCK
 STYLE: UMBRIANO
 SIZE: RANDOM BUNDLE 6cm
 PATTERN: UMBRIANO RANDOM B
 COLOUR: SUMMER WHEAT

CONCRETE UNIT PAVEMENT - TYPE 'B' (B)
 MANUFACTURE: UNILOCK
 STYLE: TOWN HALL PAVERS
 SIZE: 4" X 12"
 PATTERN: HERRINGBONE
 COLOUR: BASALT

GENERAL GUIDE FOR STONE CLADDING:

OVERALL PERCENTAGE BREAKDOWN FOR SIZES	REQUIRED SIZE	SIZES BREAKDOWN IN PERCENTAGE PER NATURAL STONE
60%	2'-4'	80% KINGSTON LIMESTONE 20% KINGSTON HLE SANDSTONE - LANDSDOWNE BUFF
40%	5'-8'	

LOCATION OF SEED TYPES ARE NOTED ON PLAN

SEED WITH THE FOLLOWING SEED MIXTURES AS SUPPLIED BY ONTARIO SEED COMPANY (1-800-465-5849) OR APPROVED EQUAL

TYPE 'A'-OSC # 8175 - FACW WETLAND SEED MIXTURE

BEBB'S SEDGE (<i>Carex bebbii</i>)	1%
BLUE LOBELIA (<i>Lobelia siphilitica</i>)	1%
BLUE VERVAIN (<i>Verbena hastata</i>)	4%
BLUNT BROOM SEDGE (<i>Carex scoparia</i>)	1%
BONSET (<i>Eupatorium perfoliatum</i>)	1%
FOX SEDGE (<i>Carex vulpinoidea</i>)	25%
GREEN BULRUSH (<i>Scirpus atrovirens</i>)	8%
HEATH ASTER (<i>Aster pilosus</i>)	1%
LURID SEDGE (<i>Carex lurida</i>)	10%
NEW ENGLAND ASTER (<i>Aster novae-angliae</i>)	1%
PURPLE STEMMED ASTER (<i>Aster puniceus</i>)	1%
SOFT RUSH (<i>Juncus effusus</i>)	1%
SPOTTED JOE PYE WEED (<i>Eupatorium maculatum</i>)	1%
SQUARE STEMMED MONKEY FLOWER (<i>Mimulus ringens</i>)	1%
SWAMP MILKWEED (<i>Asclepias incarnata</i>)	1%
TALL MANNA GRASS (<i>Glyceria grandis</i>)	1%
VIRGINIA WILD RYE (<i>Elymus virginicus</i>)	40%
WOOLGRASS (<i>Scirpus cyperinus</i>)	1%

SEED RATE: 22-25 kg/ha

NURSE CROP

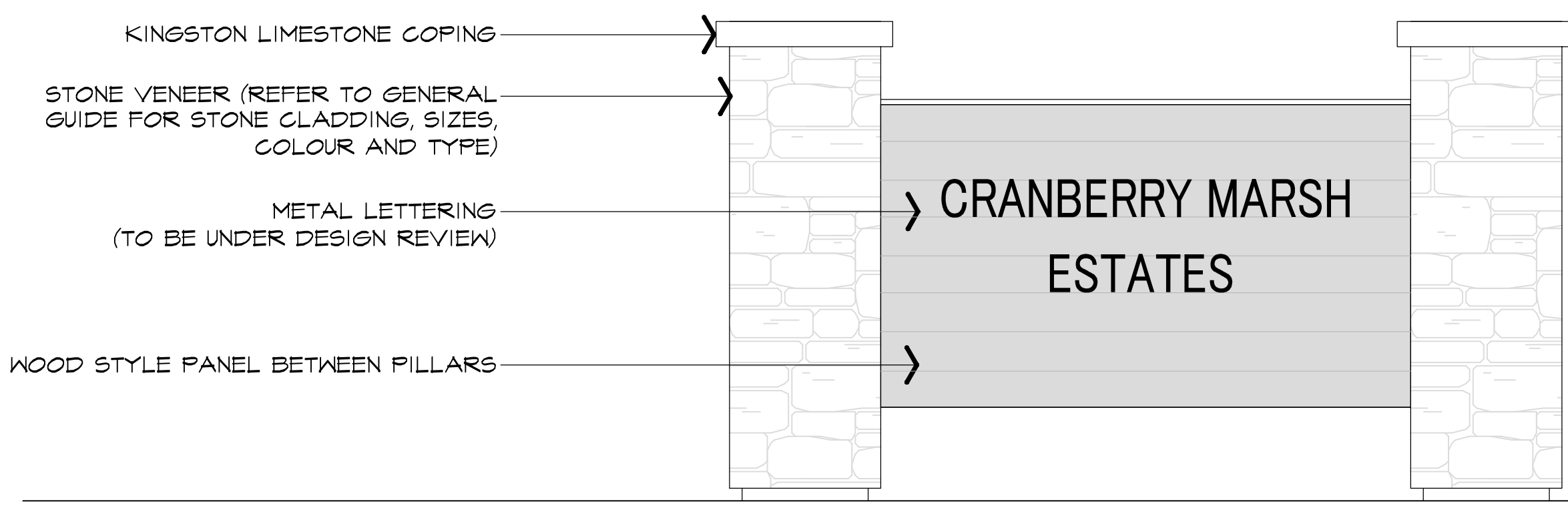
ANNUAL RYE GRASS (*Lolium multiflorum*)
 SEED RATE: 28kg/ha

PLANT LIST

PROJECT NAME: 11589 HIGHWAY 26 CRANBERRY MARSH ESTATES - (ABAL 3525)

In the event of a discrepancy between the planting plan and the plant list quantities, the planting plan shall govern.

KEY	QUANTITY	BOTANICAL NAME	COMMON NAME	CALIPER	HEIGHT	SPREAD	ROOT	REMARKS	SPACING
DECIDUOUS TREES									
A	10	AGER X FREEMANII 'AUTUM BLAZE'	AUTUM BLAZE MAPLE	6.0mm	3500mm	1500mm	W.B.	EQUAL FORM	----
B	5	AMELANGHER CANADENSIS	SERVICEBERRY	3 X 5.0mm	3500mm	1500mm	W.B.	MULTI-STEM	----
C	7	GINKGO BILOBA 'PRINCETON SENTRY'	PRINCETON SENTRY MAIDENHAIR TREE	6.0mm	3500mm	1500mm	W.B.	EQUAL FORM	----
D	9	GLEDITSIA TRIAGANTHOS 'STREET KEEPER'	STREET KEEPER HONEY-LOCUST	6.0mm	3500mm	1500mm	W.B.	EQUAL FORM	----
E	13	CELTIS OCCIDENTALIS	HACKBERRY	6.0mm	3500mm	1500mm	W.B.	EQUAL FORM	----
F	13	QUERCUS BIGLOR	SHAMP WHITE OAK	6.0mm	3500mm	1500mm	W.B.	EQUAL FORM	----
G	11	TILIA AMERICANA	BASSWOOD	6.0mm	3500mm	1500mm	W.B.	EQUAL FORM	----
CONIFEROUS TREES									
H	4	THUJA OCCIDENTALIS 'DEGROOT'S SPIRE'	DEGROOT'S SPIRE CEDAR	----	2500mm	800mm	W.B.	SPECIMEN	----
J	4	PINUS STROBUS	EASTERN WHITE PINE	----	3500mm	1000mm	W.B.	SPECIMEN	----
K	35	PINUS STROBUS 'STONE PILLAR'	STONE PILLAR EASTERN WHITE PINE	----	3500mm	1000mm	W.B.	SPECIMEN	----
L	33	THUJA OCCIDENTALIS 'EMERALD'	EMERALD CEDAR	----	3500mm	1000mm	W.B.	SPECIMEN	----
DECIDUOUS SHRUBS									
oo	50	HYDRANGEA ARBORESCENS 'ANNABELLE'	ANNABELLE HYDRANGEA	----	500mm	500mm	3 gal. POT	MIN. 2 YRS. 6TH.	650mm
bb	80	CORNUS SERICEA 'ARCTIC FIRE'	ARCTIC FIRE DOGWOOD	----	800mm	----	3 gal. POT	MIN. 2 YRS. 6TH.	750mm
PERENNIALS, AND GRASSES									
ooo	38	SEDUM 'AUTUMN JOY'	AUTUMN JOY STONECROP	----	----	----	3 gal. POT	MIN. 2 YRS. 6TH.	500mm
ccc	20	FENISETUM ALOPEGURIODES	FOUNTAIN GRASS	----	----	----	3 gal. POT	MIN. 2 YRS. 6TH.	500mm



1 ENTRY FEATURE CONCEPT

NOTE: CONTRACTOR RESPONSIBLE FOR PROVIDING SHOP DRAWINGS STAMPED BY A STRUCTURAL ENGINEER FOR FINAL APPROVAL BY LANDSCAPE ARCHITECT. STRUCTURAL WORKS TO BE REVIEWED AND CERTIFIED BY THE DESIGN ENGINEER.

All information hereon to be checked and verified at the site and any discrepancies must be reported to and clarified by the landscape architect before commencing work. All drawings, specifications, details, digital information, etc., prepared by the landscape architect are instruments of service and as such are his property and must be returned at his request.

ALEXANDER BUDREVICS ASSOCIATES LTD. LANDSCAPE ARCHITECTS

895 Don Mills Road, Second Tower, Suite 212 Toronto, Ontario, Canada, M3C 1W3

416.444.5201 416.444.5208

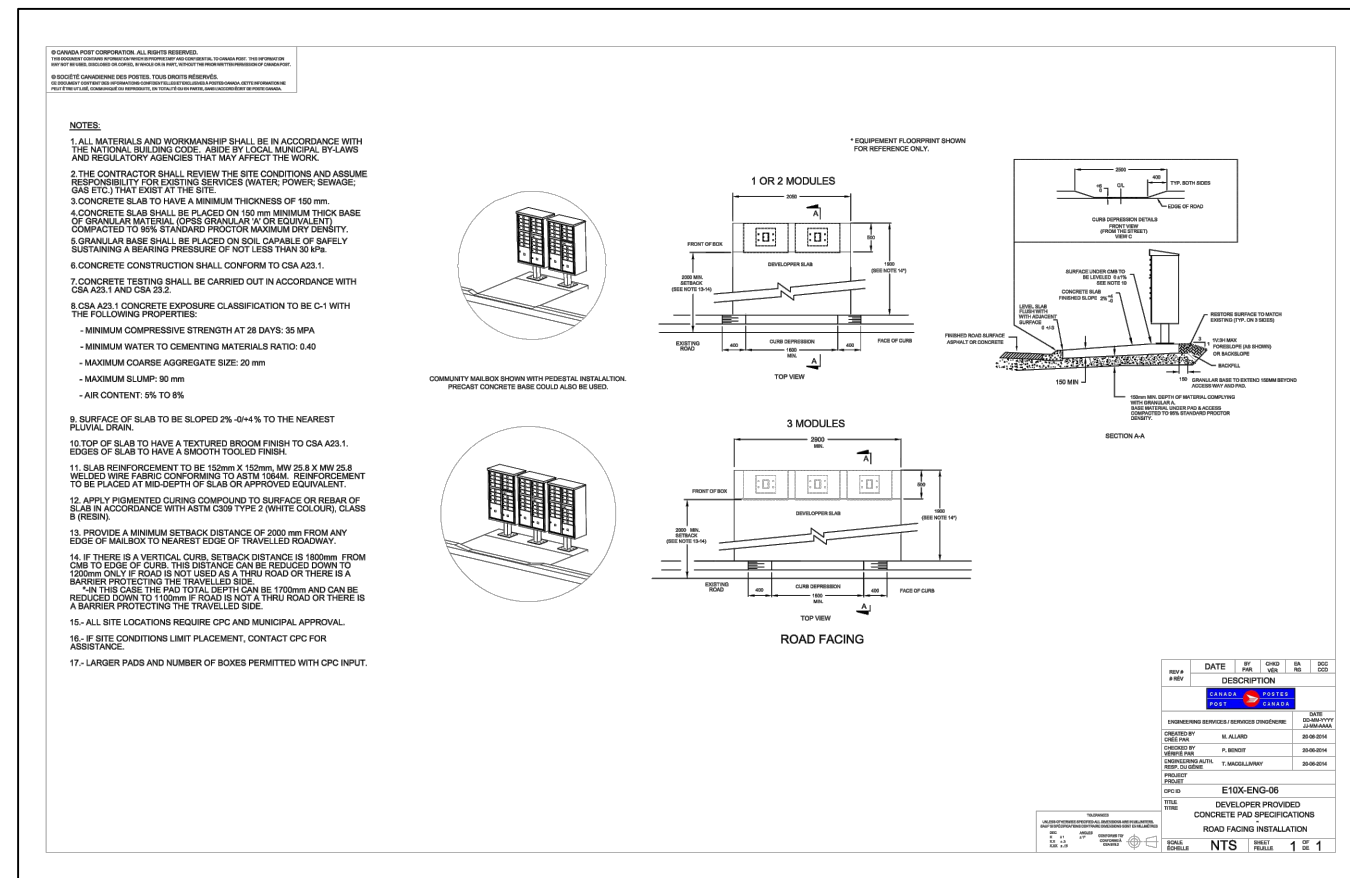
www.budrevics.com

project
11589 HIGHWAY 26 CRANBERRY MARSH ESTATES
 HIGHWAY 26
 TOWN OF COLLINGWOOD
 CRANBERRY MARSH ESTATES

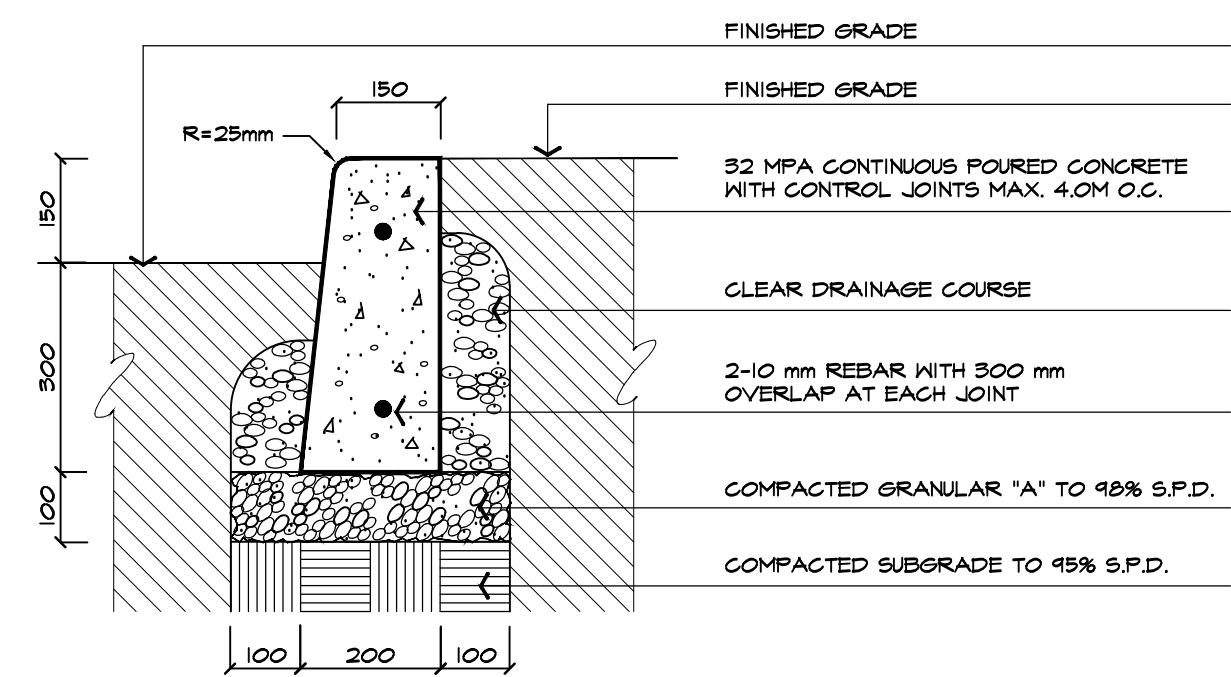
drawing
LANDSCAPE PLAN

date OCT 20, 2021	drawn NH
scale* 1:400	file 3523 L1 V4-231012
direction 	project no. 3523
	sheet no. L-1

*NOTED SCALE IS APPLICABLE ONLY WHEN PRINTED ON ARCH D (34"x46") SIZE SHEET



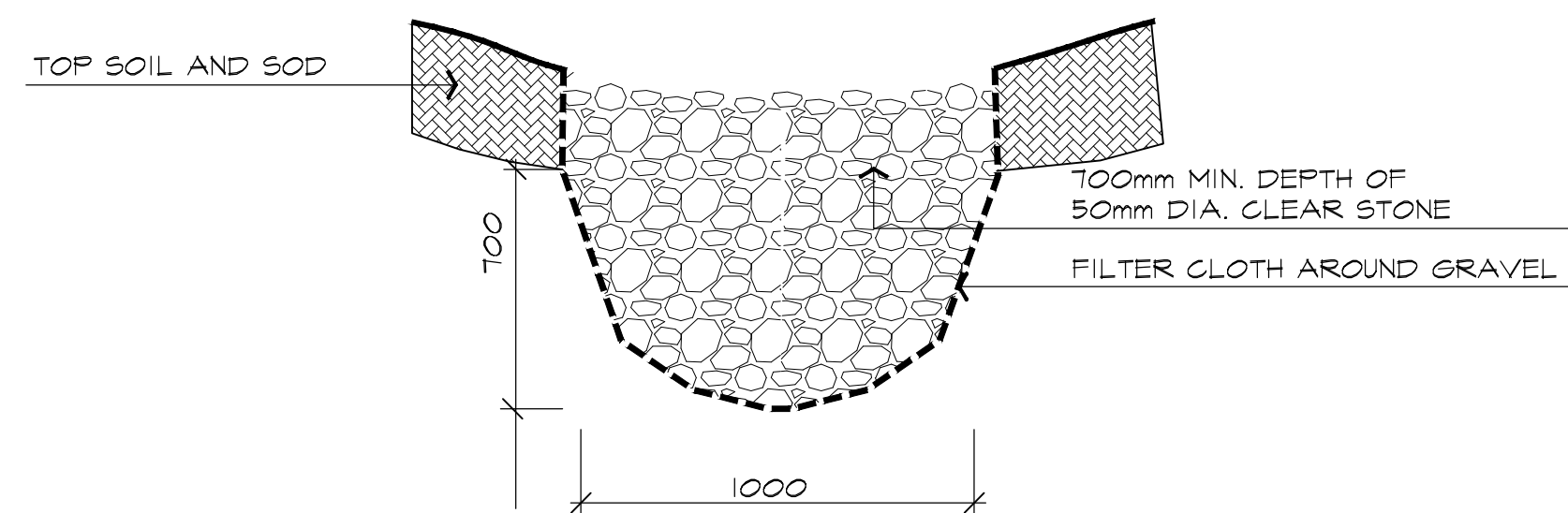
8 CANADA POST MAILBOX NTS
AS PER ENGINEER DWGS.



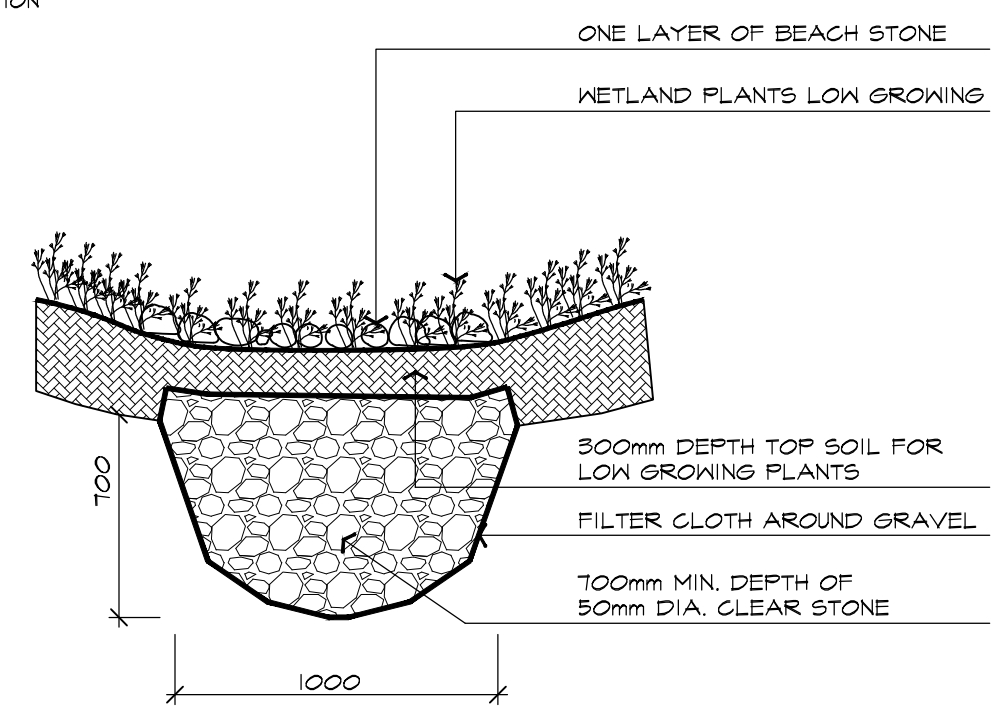
9 CONCRETE CURB DETAIL NTS
ABAL H101-440315



5 BENCH NTS
 MODEL: P.5 682-AL-EM-EX-50-BO-74
 MANUFACTURER: HAUSER SITE FURNITURE (800-268-1328 -TRUDY WALKER)
 PRODUCT: KINGS MILL ARG BENCH WITH ENVIRO WOOD SLATS
 SIZE: 188.0cm X 56.5cm X 74.4cm
 SEAT HEIGHT 45.1cm
 COLOUR: WALNUT
 OTHER: SUN-METAL POWDER COAT FINISH
 NOTE: OPTIONAL SKATEBOARD DEFLECTOR
 OR APPROVED EQUAL



6 SWALE DETAIL NTS
TYPICAL INSTALLATION



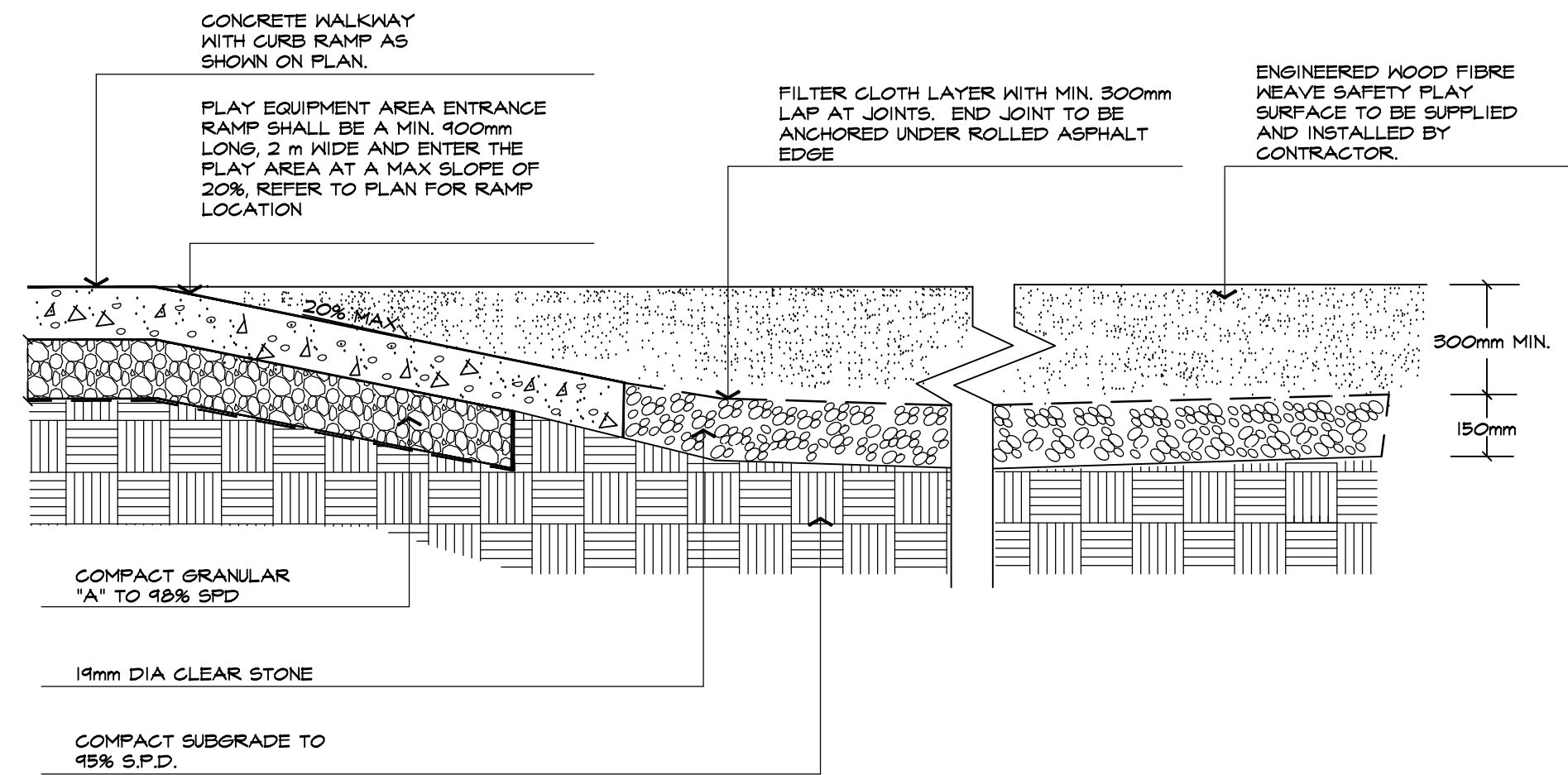
7 BIOSWALE DETAIL NTS



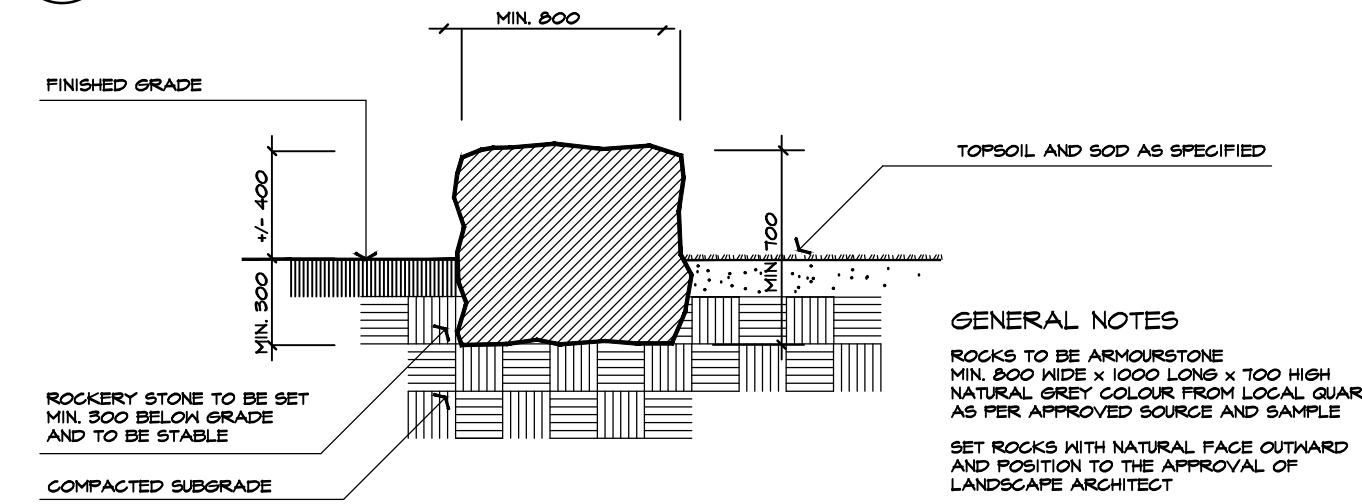
4 PLAY EQUIPMENT
 EARTHSCAPE "SLIDE PLATFORM 900-(PLASTIC SLIDE)"
 PLAYGROUND SHALL COMPLY WITH THE CANADIAN STANDARDS ASSOCIATION'S CAN/CSA-Z614-20:CHILDREN'S PLAYGROUND EQUIPMENT AND SURFACING AND THE ACCESSIBILITY FOR ONTARIANS WITH DISABILITIES ACT (AODA)- PART 4:1 DESIGN OF PUBLIC SPACES STANDARD



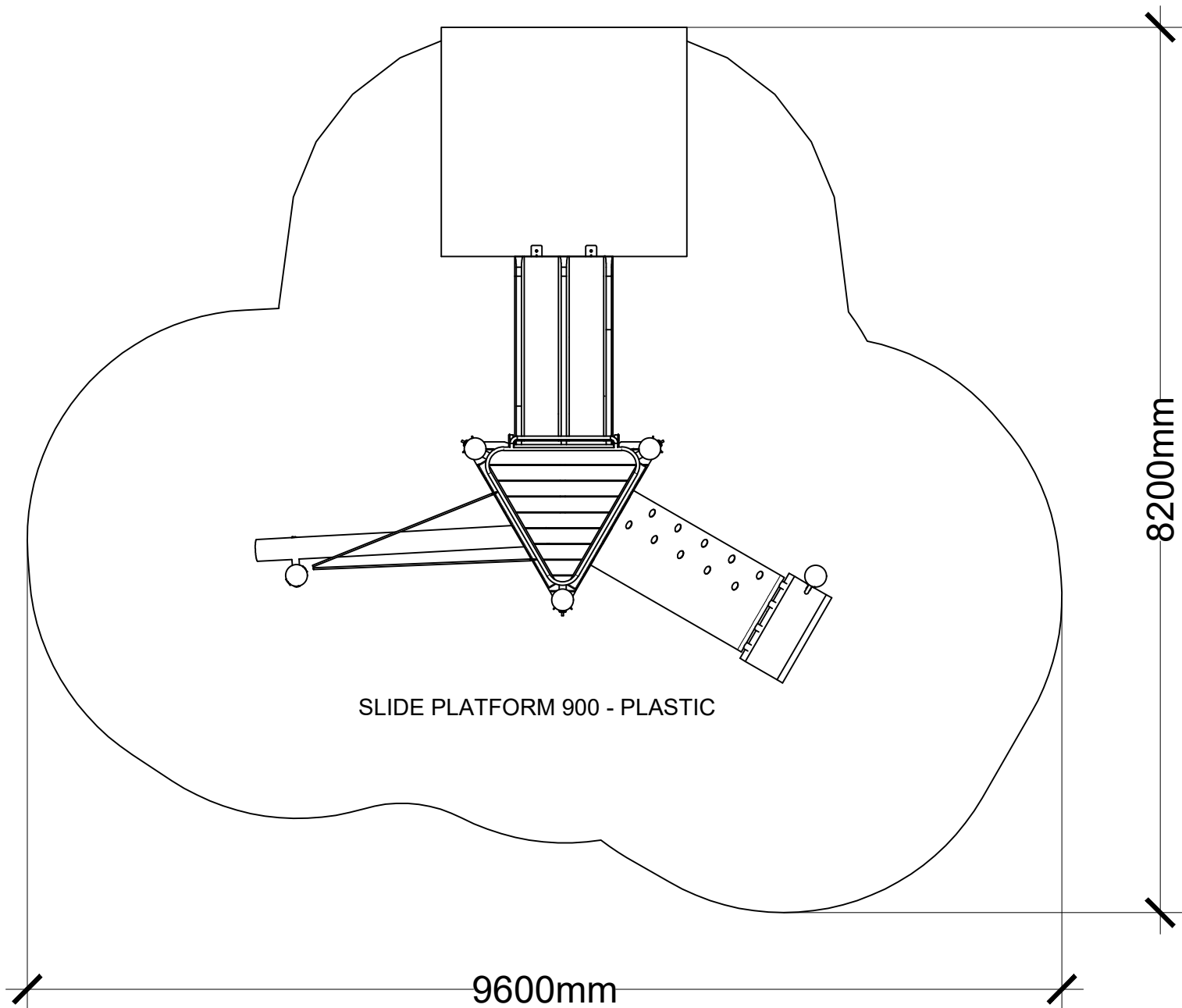
1 BIKE RACK NTS
MAGLIN 350 SERIES BIKE RACK (5 RINGS)



2 CONCRETE PLAYGROUND RAMP AND FIBRE WEAVE SAFETY SURFACE DETAIL NTS
ABAL G105X190417



3 ROCKERY STONE DETAIL NTS
ABAL R201-450317



NTS

5.	MAR 19 2024	ISSUED FOR SUBMISSION	LE /E/K
4.	DEC 5 2023	ISSUED FOR SUBMISSION	LE /E/K
3.	OCT 12 2023	ISSUED FOR SUBMISSION	LE /E/K
2.	AUG 1 2023	ISSUED FOR SUBMISSION	LE /E/K
1.	DEC 5 2022	ISSUED FOR SUBMISSION	KM /E/K
0.	OCT.22 2021	ISSUED FOR CLIENT REVIEW	NH
no.	date	version	by

All information hereon to be checked and verified at the site and any discrepancies must be reported to and clarified by the landscape architect before commencing work. All drawings, specifications, details, digital information, etc., prepared by the landscape architect are instruments of service and as such are his property and must be returned at his request.

ALEXANDER BUDREVICS & ASSOCIATES LIMITED LANDSCAPE ARCHITECTS
 895 Don Mills Road, Second Tower, Suite 212
 Toronto, Ontario, Canada, M3C 1W3
 416.444.5201
 416.444.5208
 www.budrevics.com

project
 11589 HIGHWAY 26
 CRANBERRY MARSH ESTATES
 HIGHWAY 26
 TOWN OF COLLINGWOOD
 CRANBERRY MARSH ESTATES

drawing
 LANDSCAPE DETAILS

date	OCT 20, 2021	drawn	NH
scale*	AS SHOWN	file	3523 D2 V4-231012
direction		project no.	3523
		sheet no.	D-2

*NOTED SCALE IS APPLICABLE ONLY WHEN PRINTED ON ARCH D (34"x46") SIZE SHEET