

LEGEND

- DECIDUOUS TREE
- MULTI-STEM TREE
- CONIFEROUS TREE
- SHRUBS & PERENNIALS
- SODDED AREA
- SEEDED AREA

BASE INFORMATION OBTAINED ELECTRONICALLY FROM 2LS DESIGN (JOB NO. 2020-14; TEL. 647-456-2828)

no.	date	version	by
4.	DEC 5 2023	ISSUED FOR SUBMISSION	L/E /E/K
3.	OCT 12 2023	ISSUED FOR SUBMISSION	L/E /E/K
2.	AUG 1 2023	ISSUED FOR SUBMISSION	L/E /E/K
1.	DEC 5 2022	ISSUED FOR SUBMISSION	KM /E/K
0.	OCT. 22 2021	ISSUED FOR CLIENT REVIEW	NH

All information hereon to be checked and verified at the site and any discrepancies must be reported to and clarified by the landscape architect before commencing work. All drawings, specifications, details, digital information, etc., prepared by the landscape architect are instruments of service and as such are his property and must be returned at his request.

CONCRETE UNIT PAVER - TYPE 'A' (A)
 MANUFACTURE, UNLOCK
 STYLE: UMBRIANO
 SIZE: RANDOM BUNDLE 6cm
 PATTERN: UMBRIANO RANDOM B
 COLOUR: SUMMER WHEAT

CONCRETE UNIT PAVER - TYPE 'B' (B)
 MANUFACTURE, UNLOCK
 STYLE: TOWN HALL PAVERS
 SIZE: 4" X 12"
 PATTERN: HERRINGBONE
 COLOUR: BASALT

GENERAL GUIDE FOR STONE CLADDING:

	OVERALL PERCENTAGE BREAKDOWN FOR SIZES	REQUIRED SIZE	SIZES BREAKDOWN IN PERCENTAGE PER NATURAL STONE
LEDGESTONE	60%	2'-4"	80% KINGSTON LIMESTONE 20% KINGSTON HUE SANDSTONE - LANDSDOWNE BUFF
	40%	5'-8"	

LOCATION OF SEED TYPES ARE NOTED ON PLAN

SEED WITH THE FOLLOWING SEED MIXTURES AS SUPPLIED BY ONTARIO SEED COMPANY (1-800-465-5849) OR APPROVED EQUAL

TYPE 'A'-OSC # 8175 - FACW WETLAND SEED MIXTURE

BEBB'S SEDGE (<i>Carex bebbii</i>)	1%
BLUE LOBELIA (<i>Lobelia siphilitica</i>)	1%
BLUE VERVAIN (<i>Verbena hastata</i>)	4%
BLUNT BROOM SEDGE (<i>Carex scoparia</i>)	1%
BONSET (<i>Eupatorium perfoliatum</i>)	1%
FOX SEDGE (<i>Carex vulpinoidea</i>)	25%
GREEN BULRUSH (<i>Scirpus atrovirens</i>)	8%
HEATH ASTER (<i>Aster pilosus</i>)	1%
LURID SEDGE (<i>Carex lurida</i>)	10%
NEW ENGLAND ASTER (<i>Aster novae-angliae</i>)	1%
PURPLE STEMMED ASTER (<i>Aster puniceus</i>)	1%
SOFT RUSH (<i>Juncus effusus</i>)	1%
SPOTTED JOE PYE WEED (<i>Eupatorium maculatum</i>)	1%
SQUARE STEMMED MONKEY FLOWER (<i>Mimulus ringens</i>)	1%
SWAMP MILKWEED (<i>Asclepias incarnata</i>)	1%
TALL MANNA GRASS (<i>Glyceria grandis</i>)	1%
VIRGINIA WILD RYE (<i>Elymus virginicus</i>)	40%
WOOLGRASS (<i>Scirpus oyperinus</i>)	1%

SEED RATE: 22-25 kg/ha

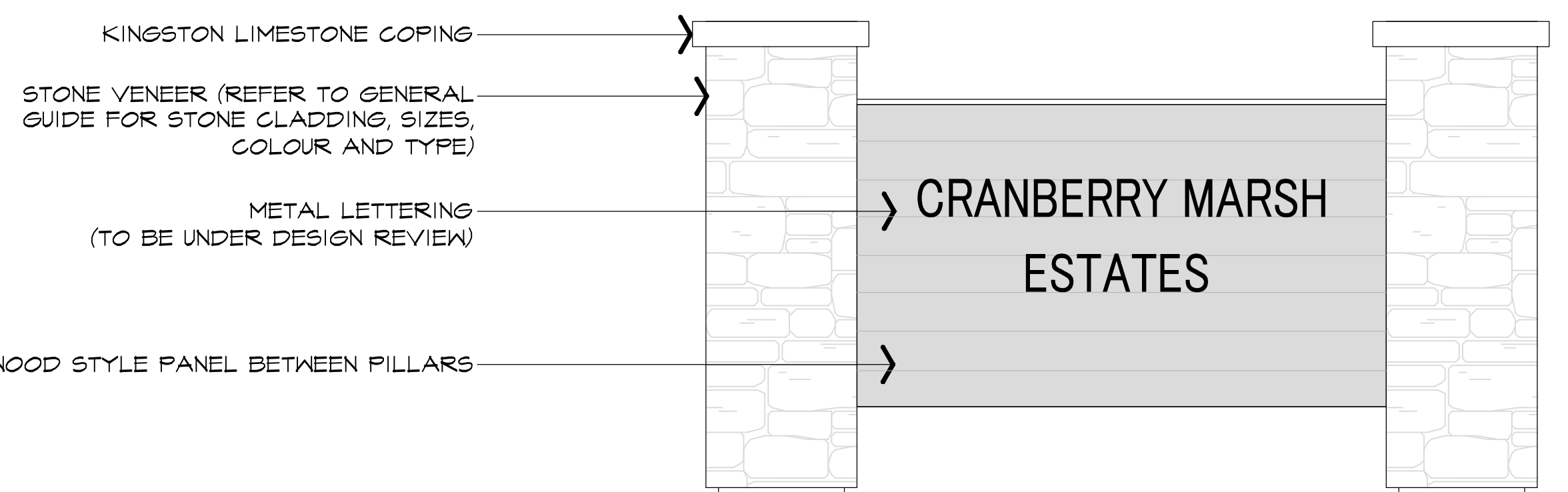
NURSE CROP

ANNUAL RYE GRASS (*Lolium multiflorum*)
 SEED RATE: 28kg/ha

PLANT LIST

PROJECT NAME: 11589 HIGHWAY 26 CRANBERRY MARSH ESTATES - (ABAL 3525)

KEY	QUANTITY	BOTANICAL NAME	COMMON NAME	CALIPER	HEIGHT	SPREAD	ROOT	REMARKS	SPACING
DECIDUOUS TREES									
A	10	AGER X FREEMANII 'AUTUM BLAZE'	AUTUM BLAZE MAPLE	6.0mm	3500mm	1500mm	W.B.	EQUAL FORM	----
B	5	AMELANGHIER CANADENSIS	SERVICEBERRY	3 X 5.0mm	3500mm	1500mm	W.B.	MULTI-STEM	----
C	7	GINKGO BILOBA 'PRINCETON SENTRY'	PRINCETON SENTRY MAIDENHAIR TREE	6.0mm	3500mm	1500mm	W.B.	EQUAL FORM	----
D	9	GLEDITSIA TRIAGANTHOS 'STREET KEEPER'	STREET KEEPER HONEY-LOCUST	6.0mm	3500mm	1500mm	W.B.	EQUAL FORM	----
E	13	CELTIS OCCIDENTALIS	HACKBERRY	6.0mm	3500mm	1500mm	W.B.	EQUAL FORM	----
F	13	QUERCUS BIGLOR	SHAMP WHITE OAK	6.0mm	3500mm	1500mm	W.B.	EQUAL FORM	----
G	11	TILIA AMERICANA	BASSWOOD	6.0mm	3500mm	1500mm	W.B.	EQUAL FORM	----
CONIFEROUS TREES									
H	4	THUJA OCCIDENTALIS 'DEGROOT'S SPIRE'	DEGROOT'S SPIRE CEDAR	----	2500mm	800mm	W.B.	SPECIMEN	----
J	4	PINUS STROBUS	EASTERN WHITE PINE	----	3500mm	1000mm	W.B.	SPECIMEN	----
K	35	PINUS STROBUS 'STONE PILLAR'	STONE PILLAR EASTERN WHITE PINE	----	3500mm	1000mm	W.B.	SPECIMEN	----
L	33	THUJA OCCIDENTALIS 'EMERALD'	EMERALD CEDAR	----	3500mm	1000mm	W.B.	SPECIMEN	----
DECIDUOUS SHRUBS									
oo	50	HYDRANGEA ARBORESCENS 'ANNABELLE'	ANNABELLE HYDRANGEA	----	500mm	500mm	3 gal. POT	MIN. 2 YRS. 6TH.	650mm
oo	85	CORNUS SERICEA 'ARCTIC FIRE'	ARCTIC FIRE DOGWOOD	----	800mm	----	3 gal. POT	MIN. 2 YRS. 6TH.	750mm
PERENNIALS, AND GRASSES									
ooo	38	SEDUM 'AUTUMN JOY'	AUTUMN JOY STONECROP	----	----	----	3 gal. POT	MIN. 2 YRS. 6TH.	500mm
ccc	20	FENNISETUM ALOPEGURIODES	FOUNTAIN GRASS	----	----	----	3 gal. POT	MIN. 2 YRS. 6TH.	500mm



ENTRY FEATURE CONCEPT

NOTE: CONTRACTOR RESPONSIBLE FOR PROVIDING SHOP DRAWINGS STAMPED BY A STRUCTURAL ENGINEER FOR FINAL APPROVAL BY LANDSCAPE ARCHITECT. STRUCTURAL WORKS TO BE REVIEWED AND CERTIFIED BY THE DESIGN ENGINEER.

ALEXANDER BUDREVICS & ASSOCIATES LIMITED
 LANDSCAPE ARCHITECTS

895 Don Mills Road, Second Tower, Suite 212
 Toronto, Ontario, Canada, M3C 1W3

416.444.5201
 416.444.5208

www.budrevics.com

project
11589 HIGHWAY 26
CRANBERRY MARSH ESTATES
 HIGHWAY 26
 TOWN OF COLLINGWOOD

CRANBERRY MARSH ESTATES

drawing
LANDSCAPE PLAN

date	OCT 20, 2021	drawn	NH
scale*	1:400	file	3523 L1 V4-231012
direction		project no.	3523
		sheet no.	L-1

*NOTED SCALE IS APPLICABLE ONLY WHEN PRINTED ON ARCH D (34"x46") SIZE SHEET

SPECIFICATIONS

GENERAL

THESE SPECIFICATIONS ARE TO BE READ IN CONJUNCTION WITH THE GENERAL CONDITIONS OF THE CONTRACT AS PREPARED BY AND AVAILABLE AT THE OFFICE OF ALEXANDER BUDREVICS & ASSOCIATES LTD.

PRIOR TO COMMENCING WORK, THE CONTRACTOR SHALL:

1. FAMILIARIZE HIMSELF WITH THE PLANS, DETAILS, AND SPECIFICATIONS OF THIS PROJECT, VISIT THE SITE TO ASCERTAIN AND TAKE ACCOUNT OF EXISTING CONDITIONS AND ANY DEVIATIONS FROM THE PLANS IN WORK BY OTHERS, AND
2. FINALIZE ALL DESIGN ALTERNATIVES IN CONSULTATION WITH THE LANDSCAPE ARCHITECT.

PRIOR TO EXCAVATING, THE CONTRACTOR SHALL VERIFY THE LOCATION OF ALL UNDERGROUND UTILITIES. IN THE EVENT OF A CONFLICT BETWEEN A PROPOSED TREE LOCATION AND AN UNDERGROUND SERVICE, THE EXACT LOCATION OF THE TREE SHALL BE DETERMINED ON SITE BY THE LANDSCAPE ARCHITECT.

THE CONTRACTOR SHALL, AT HIS OWN EXPENSE, REPAIR ANY DAMAGE TO EXISTING WORK, STRUCTURES, FACILITIES, ETC. DONE IN THE PERFORMANCE OF HIS WORK.

ALL SITE WORK SHALL CONFORM TO THE CANADIAN NATIONAL MASTER CONSTRUCTION SPECIFICATIONS. A COPY OF WHICH CAN BE OBTAINED FROM CONSTRUCTION SPECIFICATIONS CANADA, 141 410 772 Street, Park, (416) 772-2888. FAX: (416) 772-2889. OR AT IT IS THE RESPONSIBILITY OF THE CONTRACTOR TO BE THOROUGHLY FAMILIAR WITH THESE SPECIFICATIONS AND TO MAKE NECESSARY ADJUSTMENTS TO HIS PROJECT.

SOFT LANDSCAPING

PLANT MATERIALS
ALL PLANTS SHALL BE INSTALLED TRUE TO SPECIFIED NAMES, SIZES, GRADES, ETC. AND SHALL CONFORM TO THE STANDARDS OF THE CANADIAN NURSERY TRADES ASSOCIATION.
ALL PLANTS SHALL BE NURSERY GROWN.

IN THE EVENT OF A DISCREPANCY IN PLANT QUANTITY BETWEEN THE PLANTING PLAN AND THE PLANT LIST, THE PLANTING PLAN SHALL GOVERN.

THE CONTRACTOR SHALL MAKE PLANTS AVAILABLE FOR INSPECTION BY THE LANDSCAPE ARCHITECT PRIOR TO INSTALLATION. MATERIAL NOT CONFORMING TO THE SPECIFICATIONS SHALL BE REPLACED AT THE EXPENSE OF THE CONTRACTOR.
PLANT SUBSTITUTIONS MUST BE APPROVED IN WRITING BY THE OWNER OR THE LANDSCAPE ARCHITECT PRIOR TO DELIVERY OF THE MATERIAL ON SITE.

THE LANDSCAPE ARCHITECT MAY, UPON COMPLETION OF THE WORK AND NOTWITHSTANDING PRIOR APPROVAL, AT SOURCE, REJECT PLANT MATERIAL NOT CONFORMING TO THE SPECIFICATIONS.

THE CONTRACTOR SHALL USE STANDARD INDUSTRY METHODS FOR PLANTING TREES. TREES SHALL BE TURNED TO GIVE THE BEST APPEARANCE, THEY SHALL ALSO BE GUYED AND STAKED IMMEDIATELY AFTER PLANTING AND AS DETAILED ON THE DRAWINGS.

BED PREPARATION

THE CONTRACTOR SHALL BACKFILL TREE PITS AND PLANTING BEDS TO SPECIFIED DEPTHS WITH EITHER PRE-MIXED TOPSOIL (VZ, "TRIPLE-MIX") OR A MIXTURE COMPRISED OF:
2 PARTS SANDY LOAM
1 PART FINELY PULVERIZED CANADIAN PEAT MOSS
1 PART WELL-ROTTED FARM MANURE, WITH "AGRIFORM" 20-10-5 TABLETS (OR APPROVED EQUAL) ADDED ACCORDING TO THE MANUFACTURER'S SPECIFICATIONS.

THE CONTRACTOR SHALL CONSTRUCT TREE PITS AND SHRUB BEDS WITH SOIL SAUCERS, MULCH, AND SUBSURFACE DRAINAGE AS DETAILED.
THE CONTRACTOR SHALL CONSTRUCT SHRUB BEDS IN CONTINUOUS FORMS, THE SHAPE OF WHICH SHALL BE APPROVED BY THE LANDSCAPE ARCHITECT AND/OR OWNER. ON SLOPES, SHRUB BEDS SHALL BE FASHIONED TO ALLOW FOR PROPER DRAINAGE.

TOPSOIL & FINE GRADING

THE CONTRACTOR SHALL PLACE 150mm OF RICH TOPSOIL ON APPROVED SUBGRADES. TOPSOIL SHALL BE IMPORTED WHERE REQUIRED. 10-4 FERTILIZER SHALL BE APPLIED ACCORDING TO THE MANUFACTURER'S INSTRUCTIONS AT A RATE OF 7.32 kg/100m² FOR SODDED AREAS. THE MIXTURE AND RATE OF APPLICATION SHALL BE ADJUSTED FOR SODDED AREAS.

MINOR GRADE DEFICIENCIES AND IRREGULARITIES SHALL BE ELIMINATED PRIOR TO SODDING.

SODDING

THE CONTRACTOR SHALL SOD ALL AREAS SO INDICATED ON THE DRAWINGS. SOD SHALL BE FRESHLY CUT NO. 1 GRADE NURSERY-GROWN TURF 50-75mm THICK.

SOD FOR SUNNY, EXPOSED AREAS SHALL BE 50% KENTUCKY BLUEGRASS AND 50% MERION BLUEGRASS. SOD FOR SHADDED AREAS SHALL BE 50% NUGGET KENTUCKY BLUEGRASS AND 50% CREEPING RED FESCUE.

SOD SHALL BE PLACED ON PREPARED TOPSOIL, WITH JOINTS STAGGERED AND SECTIONS ABUTTED TOGETHER IMMEDIATELY AFTER LAYING. IRRIGATION SUFFICIENT TO ENSURE MOISTURE PENETRATION TO A DEPTH OF 100mm SHALL BE APPLIED.
SOD SHALL BE MACHINE ROLLED TO ENSURE UNIFORM CONTACT WITH TOPSOIL. SOD ON ALL SLOPES SHALL BE PEGGED WHERE REQUIRED.

HARD LANDSCAPING

POURED-IN-PLACE CONCRETE WORK

THE CONTRACTOR SHALL OBTAIN WRITTEN APPROVAL OF FORMWORK PRIOR TO POURING CONCRETE. ALL CONCRETE, STEEL REINFORCING, AND FORMWORK SHALL BE AS DETAILED AND SPECIFIED ON THE DRAWINGS.
THE STYLE, COLOUR, AND FINISH OF CONCRETE ELEMENTS SHALL BE APPROVED BY THE OWNER AND/OR LANDSCAPE ARCHITECT PRIOR TO THE COMMENCEMENT OF CONCRETE WORK.
ALL STRUCTURAL CONCRETE WORK SHALL CONFORM TO LOCAL BUILDING CODES AND REGULATIONS.

BRICKWORK, STONEWORK & CONCRETE UNIT PAVING

WHERE APPLICABLE, THE CONTRACTOR SHALL OBTAIN WRITTEN APPROVAL FROM THE LANDSCAPE ARCHITECT OF ALL STRUCTURAL CONCRETE WORK BEFORE COMMENCING BRICKWORK, STONEWORK OR PAVING WORK.
ALL BRICKWORK, STONEWORK, AND CONCRETE UNIT PAVING SHALL BE AS DETAILED AND SPECIFIED ON THE DRAWINGS. UNLESS THE LANDSCAPE ARCHITECT AND/OR THE OWNER APPROVE SUBSTITUTIONS IN WRITING.

PRIOR TO STARTING THIS PORTION OF WORK, THE CONTRACTOR SHALL SUBMIT SAMPLES OF PROPOSED BRICKWORK, STONEWORK, AND CONCRETE UNIT PAVERS FOR APPROVAL BY THE LANDSCAPE ARCHITECT AND/OR THE OWNER WITH RESPECT TO STYLE, COLOUR, AND FINISH. THE CONTRACTOR MAY ALSO BE ASKED TO SUBMIT SAMPLES OF ALTERNATIVES TO THE MATERIALS SPECIFIED ON THE DRAWINGS.

WOODWORK

ALL WOOD SHALL BE NO. 1 GRADE DRESSED CLEAR CEDAR, PRESSURE-TREATED RED PINE, OR PRESSURE-TREATED JACK PINE, AS SPECIFIED ON THE DRAWINGS.
PRESSURE TREATMENT SHALL BE APPLIED TO ALL WOOD CONTACTING SOIL, ARSENATE OR EQUAL, AS PER CSA-080 SPECIFICATIONS.
CLEAR CEDAR OR SPECIALTY WOODS SHALL BE STAINED WITH TWO (2) COATS OF STAIN, PAINT OR PRESERVATIVE.

THE CONTRACTOR SHALL SUBMIT SAMPLES OF ALL PROPOSED FINISHES FOR APPROVAL BY THE LANDSCAPE ARCHITECT AND/OR THE OWNER PRIOR TO ITS APPLICATION. THE CONTRACTOR MAY ALSO BE ASKED TO SUBMIT SAMPLES OF ALTERNATIVES TO THE MATERIALS OR FINISHES SPECIFIED ON THE DRAWINGS.

MAINTENANCE

THE CONTRACTOR SHALL MAINTAIN ALL LANDSCAPED AREAS FOR A PERIOD OF FOUR (4) GROWING MONTHS FROM THE DATE OF SUBstantial COMPLETION. MAINTENANCE SHALL INCLUDE:
* PROPER IRRIGATION TO ENSURE OPTIMUM GROWTH OF TREES, SHRUBS, AND SOD
* GRASS MOWING TO MAINTAIN AN APPROXIMATE HEIGHT OF 50mm
* THE CULTIVATION AND WEEDING OF TREE PITS AND PLANTING BEDS
* INSECT AND DISEASE CONTROL

AT THE END OF THE SPECIFIED MAINTENANCE PERIOD, PROVIDED ALL PLANT MATERIAL IS ALIVE AND IN A HEALTHY GROWING CONDITION, THE OWNER WILL ASSUME THE RESPONSIBILITY OF MAINTAINING THE LANDSCAPE WORK.

PERFORMANCE ACCEPTANCE (SUBSTANTIAL COMPLETION)
WRITTEN NOTICE OF PERFORMANCE ACCEPTANCE BY THE LANDSCAPE ARCHITECT FOR SUBSTANTIAL COMPLETION OF THE PROJECT LANDSCAPE WORKS SHALL MARK THE START OF THE GUARANTEE PERIOD.

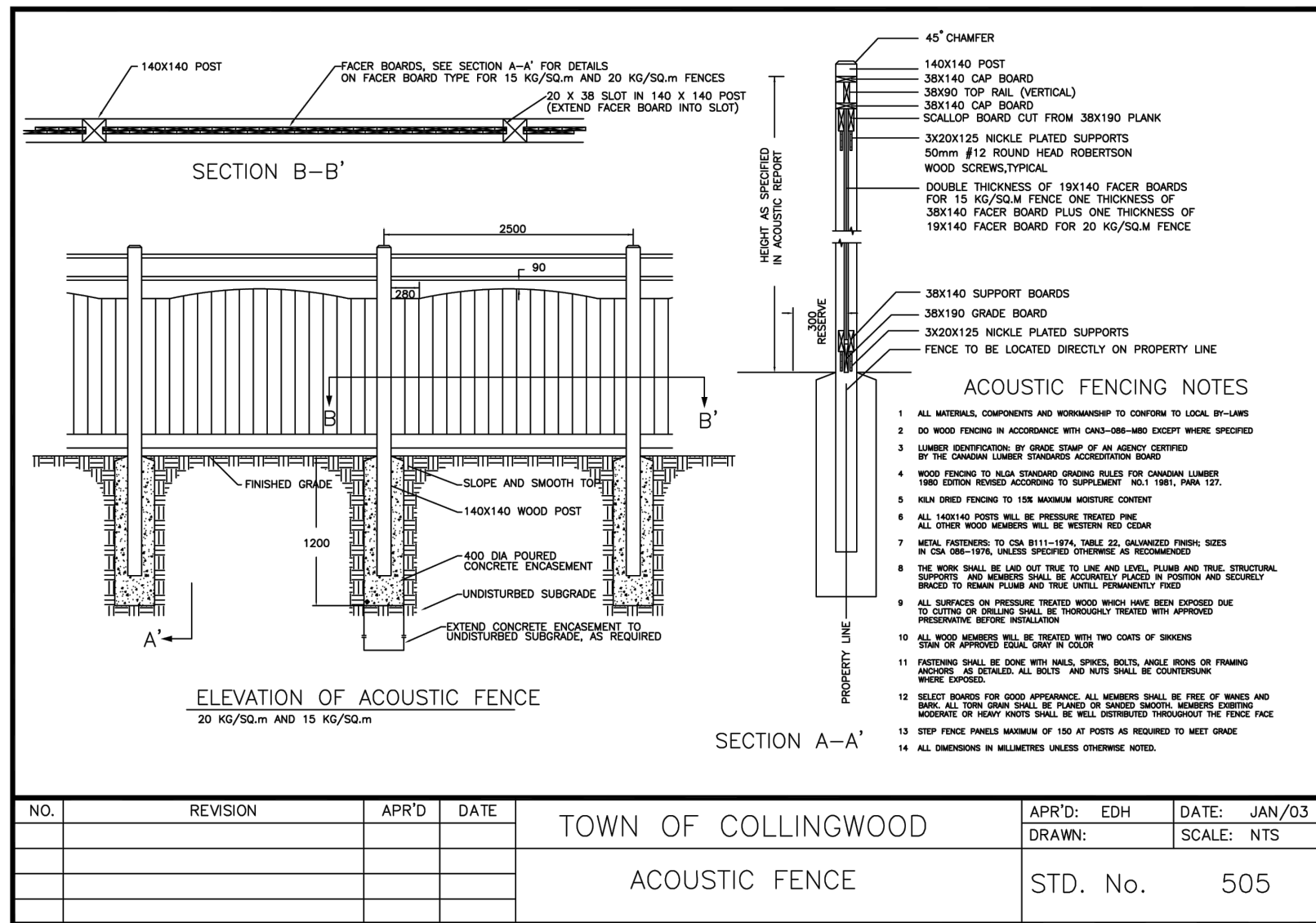
SHOULD LOCAL LAW REQUIRE MUNICIPAL ACCEPTANCE, THE LANDSCAPE ARCHITECT WILL SUBMIT THE SUBSTANTIAL COMPLETION CERTIFICATE TO THE MUNICIPALITY SO THAT THEY MAY PROCEED TO INSPECT THE WORK, ISSUE THEIR PERFORMANCE ACCEPTANCE CERTIFICATE, AND REDUCE THE AMOUNT OF SECURITIES.

GUARANTEE
ALL PLANT MATERIAL SHALL BE GUARANTEED FOR TWO (2) YEAR FROM THE DATE ON THE PERFORMANCE ACCEPTANCE CERTIFICATE ISSUED BY THE LANDSCAPE ARCHITECT. PLANTS THAT EXPLORE OR OTHERWISE FAIL TO THRIVE DURING THE GUARANTEE PERIOD SHALL BE REPLACED AT THE EXPENSE OF THE CONTRACTOR.

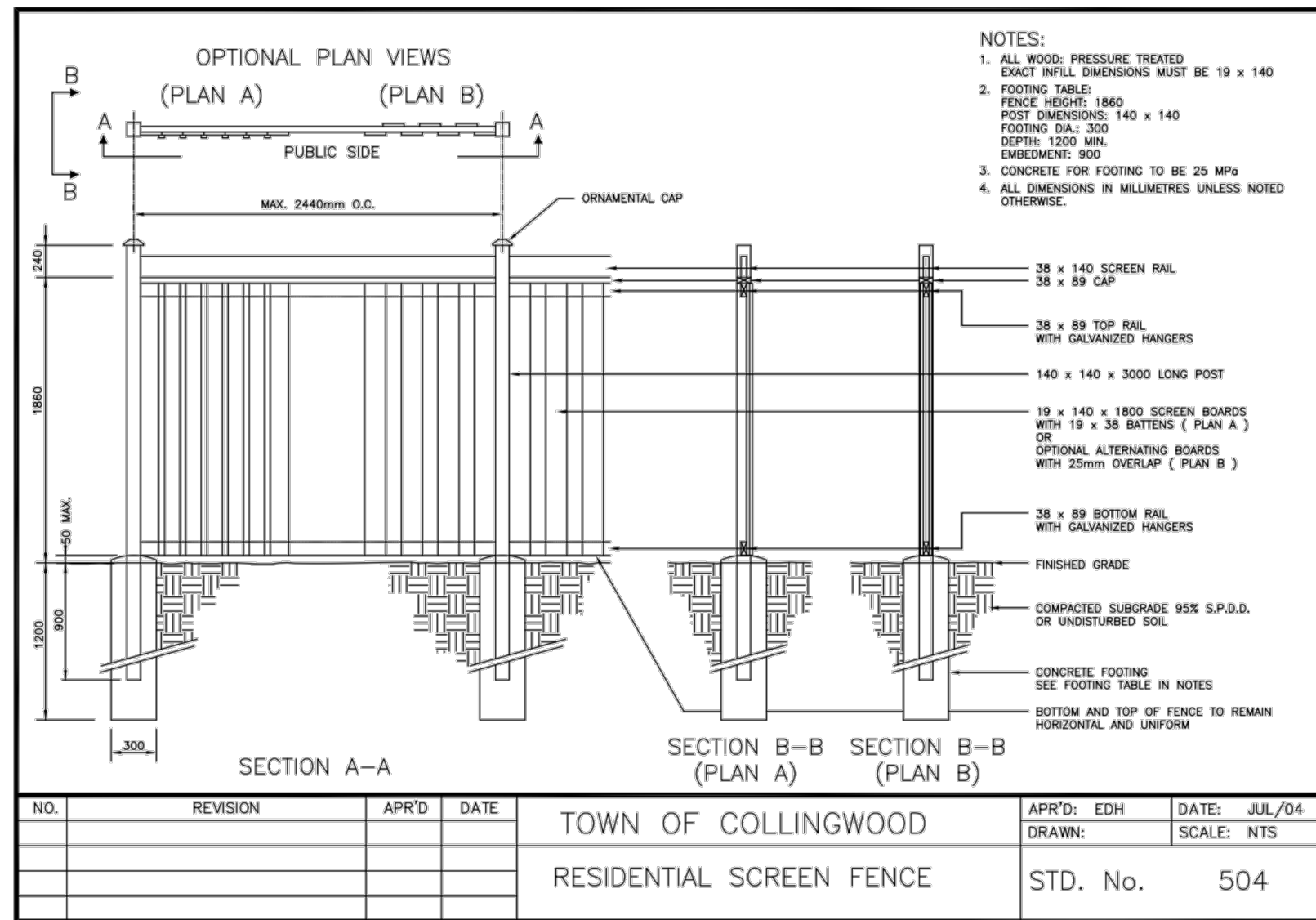
SIMILARLY, ALL OTHER LANDSCAPE WORK PERFORMED UNDER THIS CONTRACT SHALL BE FULLY GUARANTEED FOR ONE (1) YEAR FROM THE DATE OF PERFORMANCE ACCEPTANCE BY THE LANDSCAPE ARCHITECT.

FINAL ACCEPTANCE
ALL WORK SHALL BE INSPECTED AT THE END OF THE GUARANTEE PERIOD BY THE LANDSCAPE ARCHITECT. ANY OBJECTIONS SHALL BE RECTIFIED BY THE CONTRACTOR TO THE SATISFACTION OF THE LANDSCAPE ARCHITECT AND THE OWNER. THE LANDSCAPE ARCHITECT WILL THEN ISSUE A FINAL ACCEPTANCE CERTIFICATE.

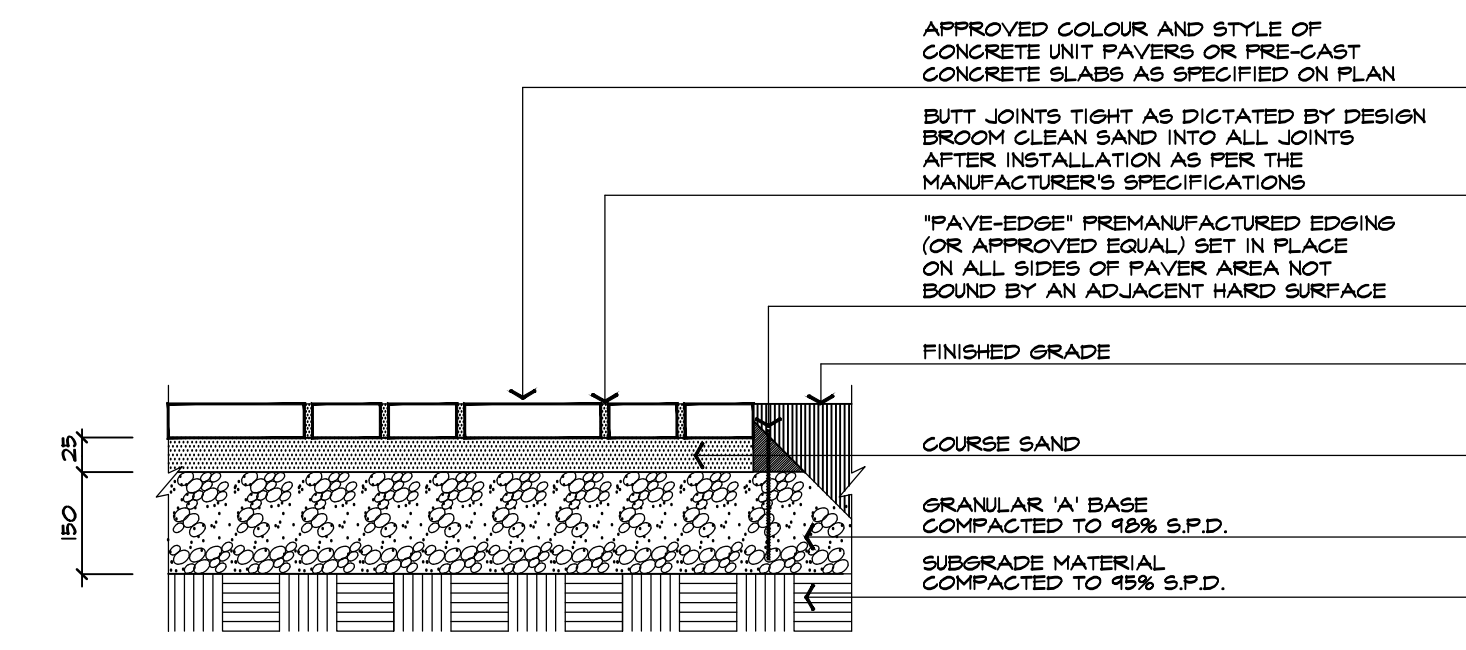
SHOULD LOCAL LAW REQUIRE MUNICIPAL ACCEPTANCE, THE LANDSCAPE ARCHITECT WILL SUBMIT THE FINAL ACCEPTANCE CERTIFICATE TO THE MUNICIPALITY SO THAT THEY MAY PROCEED TO INSPECT THE WORK, GIVE FINAL APPROVAL, AND RELEASE ALL OUTSTANDING LANDSCAPE SECURITIES.



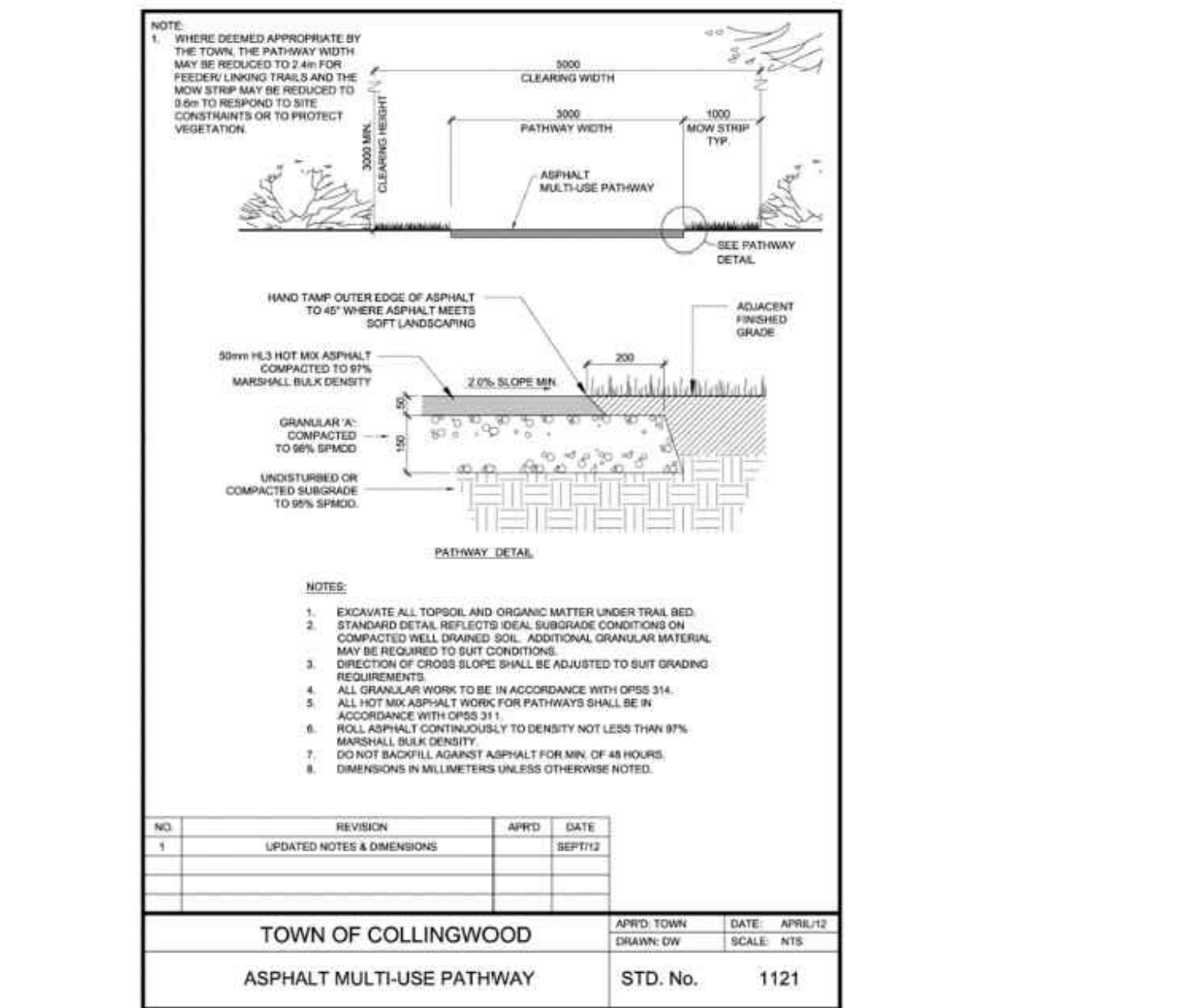
4 ACUSTIC WOOD FENCE DETAIL TOWN OF COLLINGWOOD DETAIL NTS



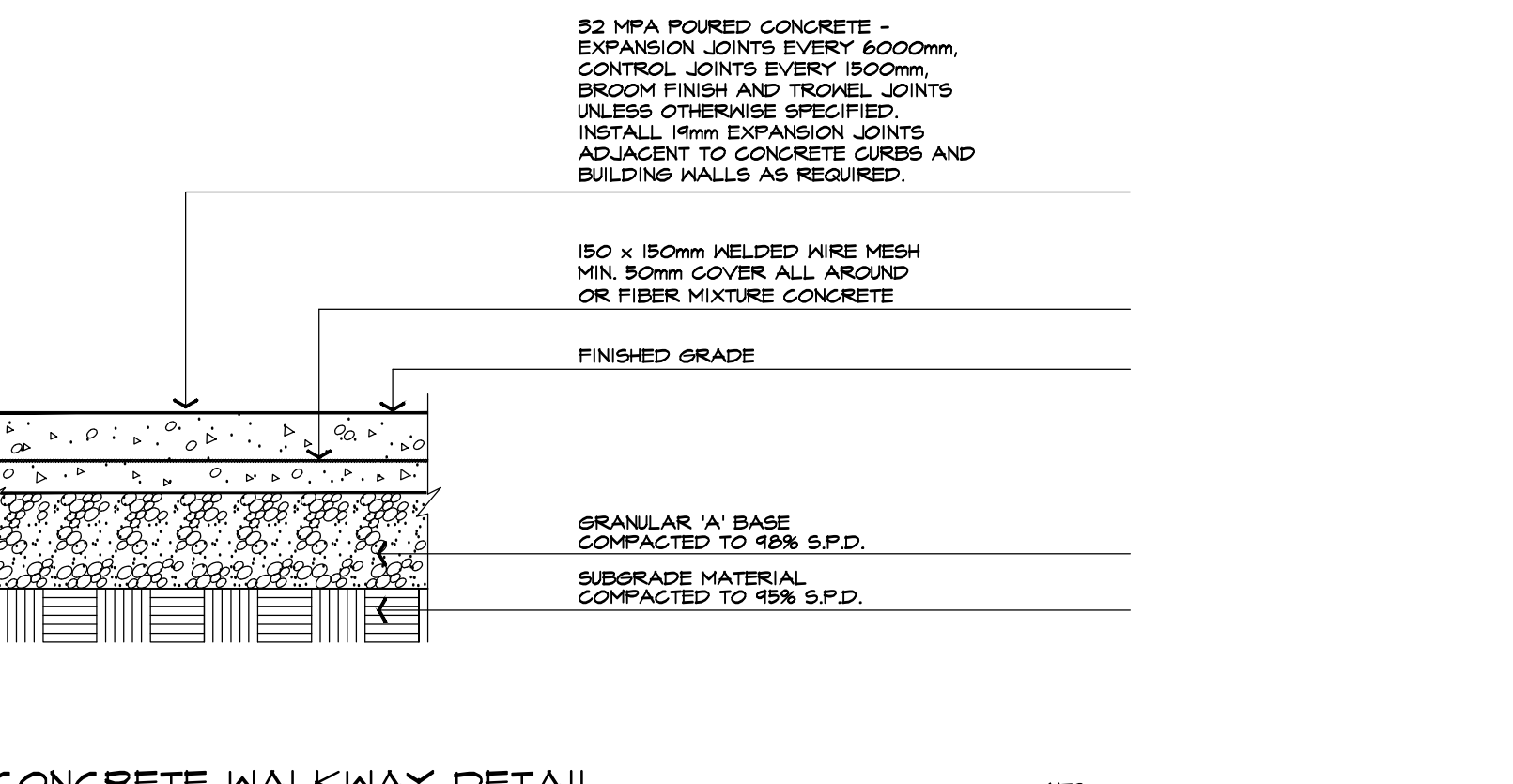
5 RESIDENTIAL SCREEN FENCE DETAIL TOWN OF COLLINGWOOD DETAIL NTS



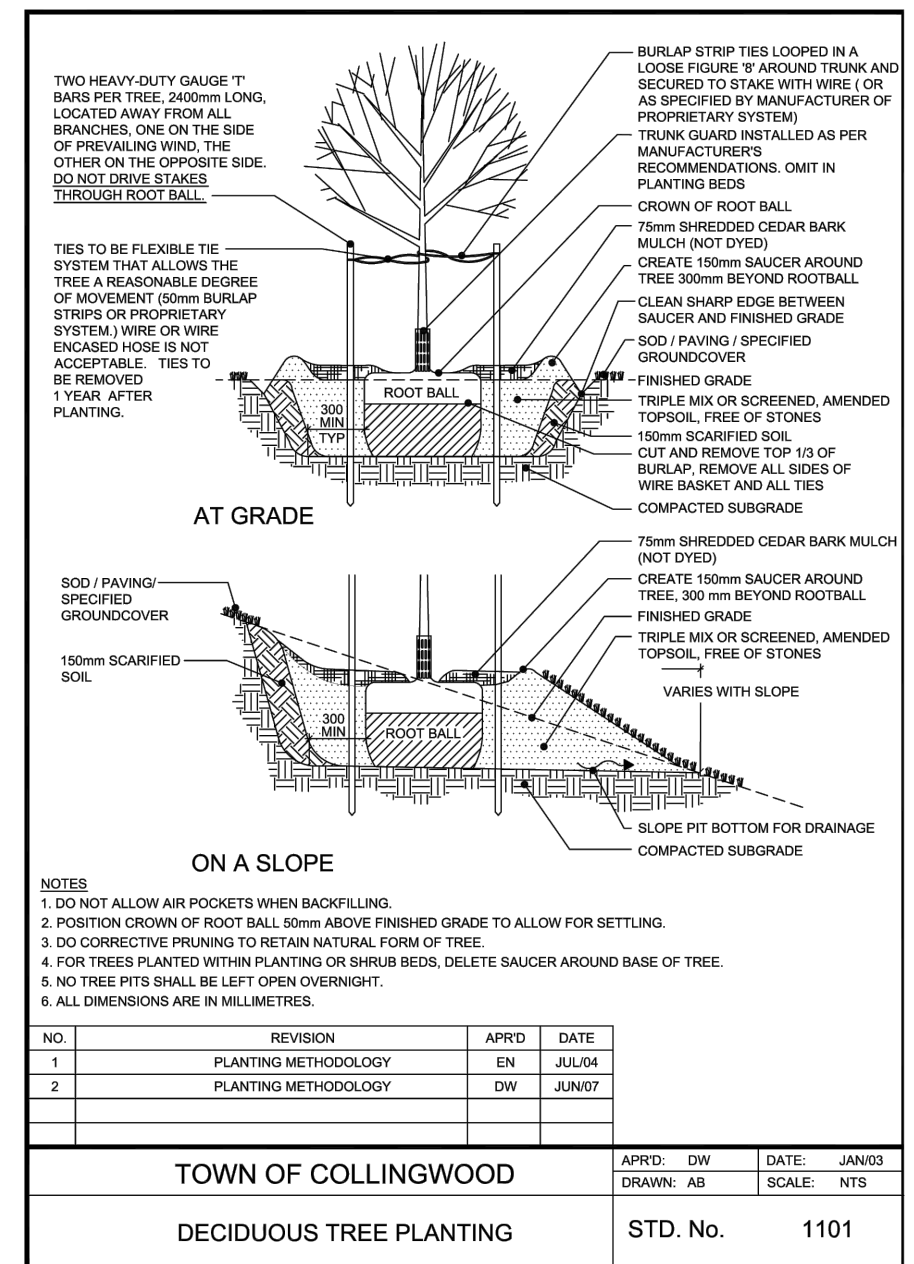
7 CONCRETE UNIT PAVER DETAIL TYPICAL INSTALLATION NTS



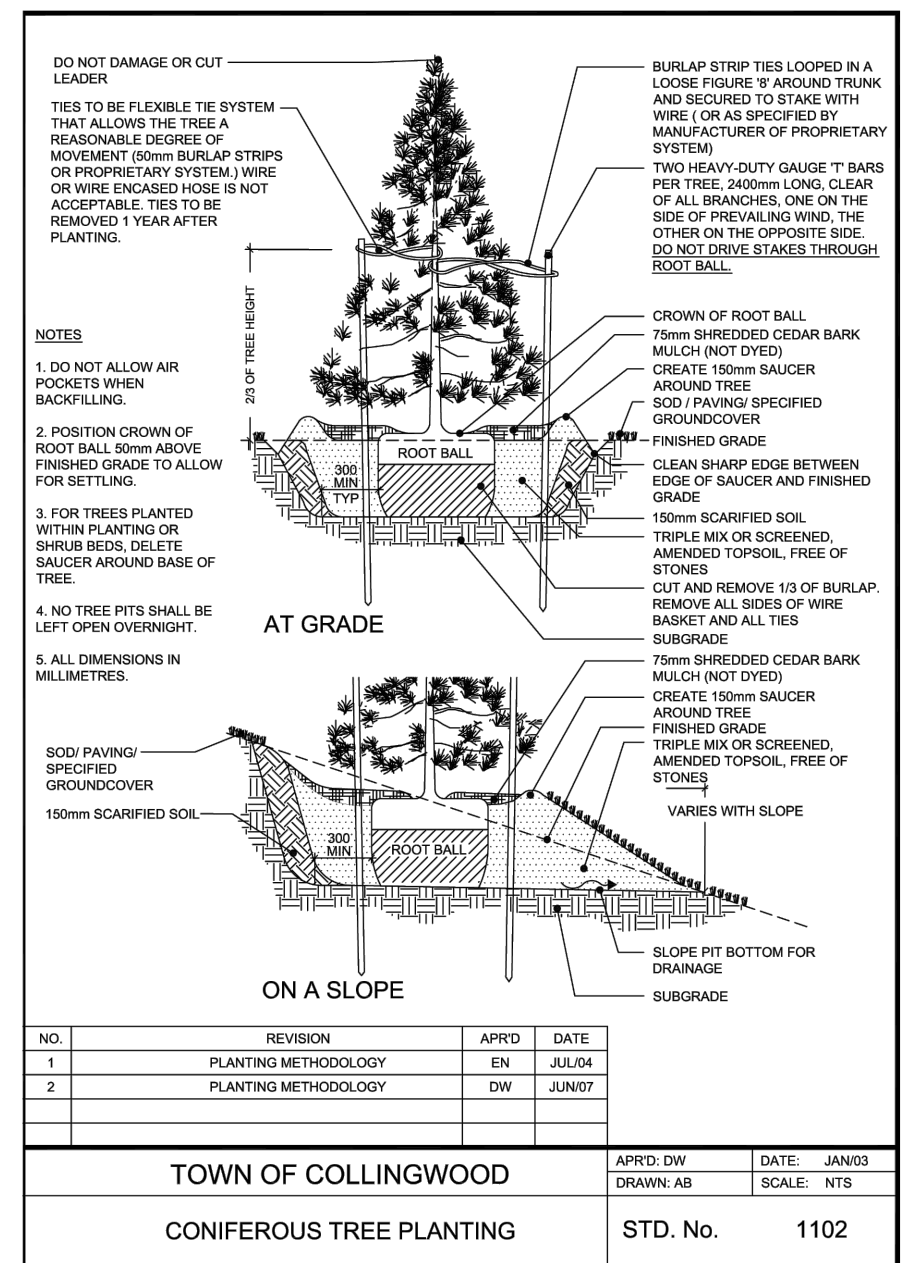
8 ASPHALT PATHWAY DETAIL TOWN OF COLLINGWOOD DETAIL NTS



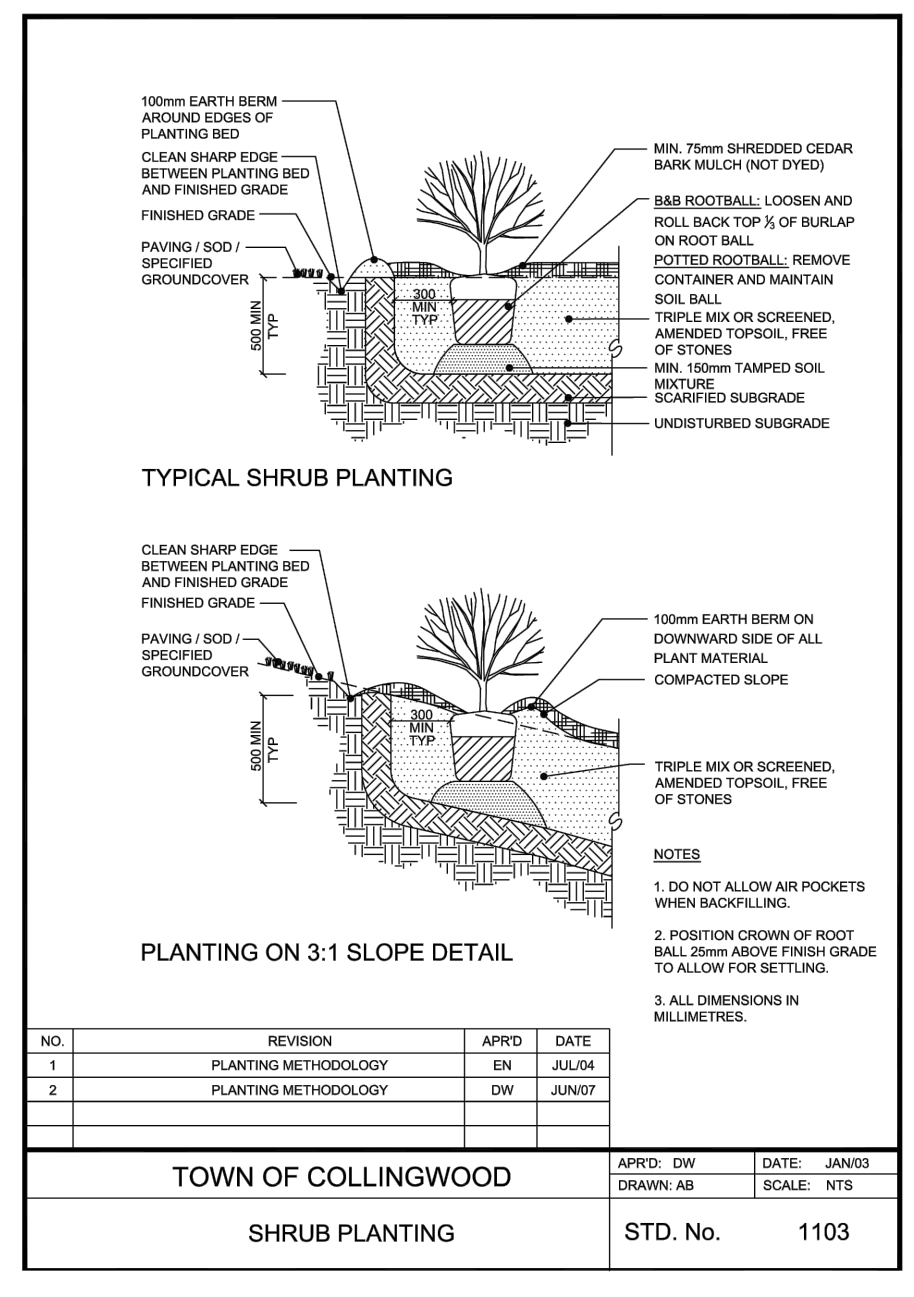
6 CONCRETE WALKWAY DETAIL TYPICAL INSTALLATION NTS



1 DECIDUOUS TREE PLANTING DETAIL TOWN OF COLLINGWOOD DETAIL NTS



2 CONIFEROUS TREE PLANTING DETAIL TOWN OF COLLINGWOOD DETAIL NTS



3 SHRUB PLANTING DETAIL TOWN OF COLLINGWOOD DETAIL NTS

no.	REVISION	APPROVED	DATE
1	PLANTING METHODOLOGY	EN	JUL/04
2	PLANTING METHODOLOGY	DW	JUN/07

TOWN OF COLLINGWOOD	APPROVED	DRAWN	DATE	SCALE	STANDARD
DECIDUOUS TREE PLANTING	DW	AB	JAN/03	NTS	1101

no.	date	version	by
4.	DEC 5 2023	ISSUED FOR SUBMISSION	LE /EK
3.	OCT 12 2023	ISSUED FOR SUBMISSION	LE /EK
2.	AUG 1 2023	ISSUED FOR SUBMISSION	LE /EK
1.	DEC 5 2022	ISSUED FOR SUBMISSION	KM /EK
0.	OCT.22 2021	ISSUED FOR CLIENT REVIEW	NH

All information hereon to be checked and verified at the site and any discrepancies must be reported to and clarified by the landscape architect before commencing work. All drawings, specifications, details, digital information, etc., prepared by the landscape architect are instruments of service and as such are his property and must be returned at his request.

ALEXANDER BUDREVICS
LANDSCAPE ARCHITECTS

895 Don Mills Road, Second Tower, Suite 212
Toronto, Ontario, Canada, M3C 2W3

416.444.5201
416.444.5208

www.budrevics.com

ASSOCIATION OF LANDSCAPE ARCHITECTS
ON/INTL
MEMBER

project
**11589 HIGHWAY 26
CRANBERRY MARSH ESTATES**
HIGHWAY 26
TOWN OF COLLINGWOOD
CRANBERRY MARSH ESTATES

drawing
**LANDSCAPE DETAILS
& SPECIFICATIONS**

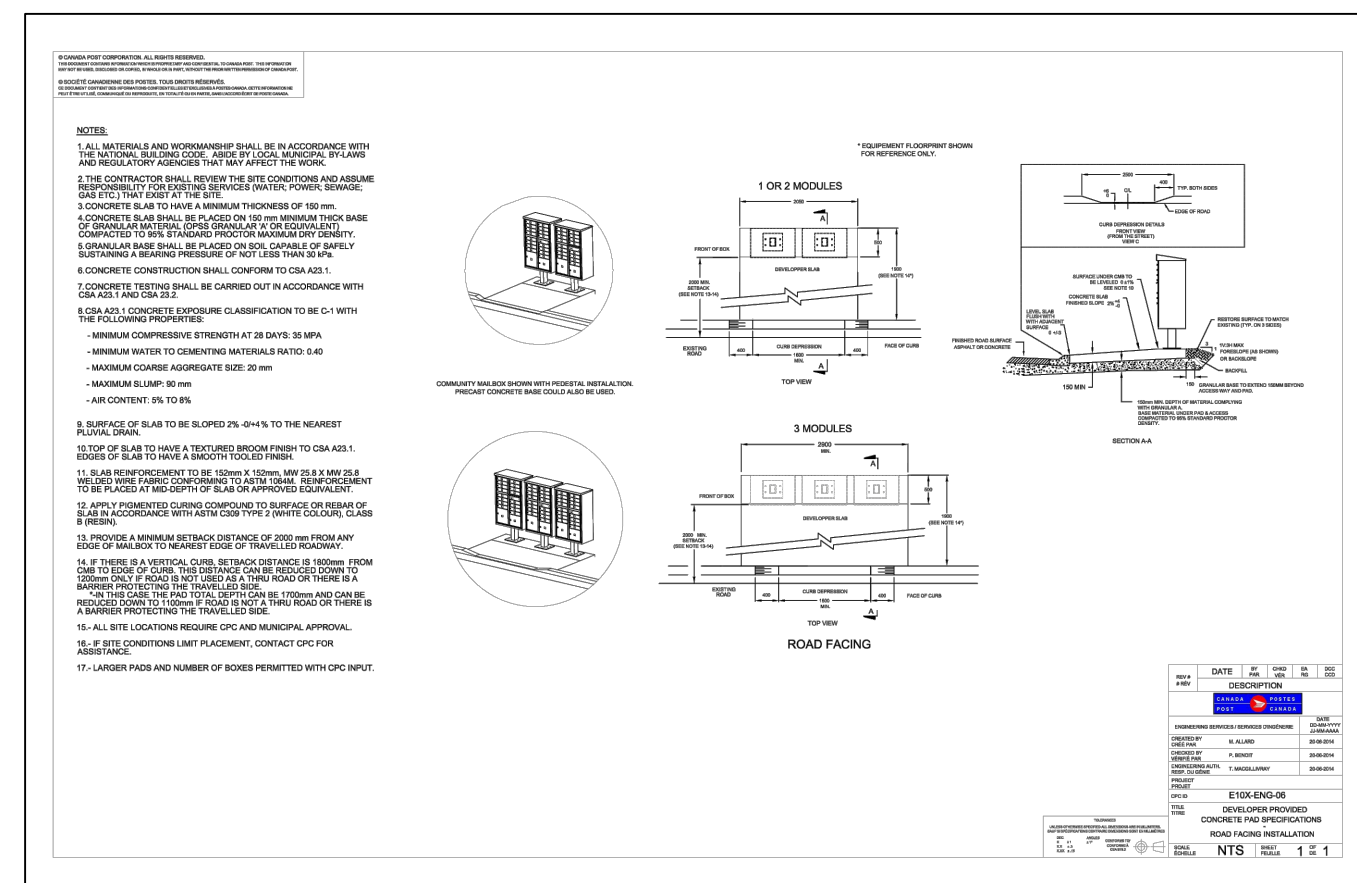
date	drawn
OCT 20, 2021	NH

scale	file
AS SHOWN	3523 D1 V4-231012

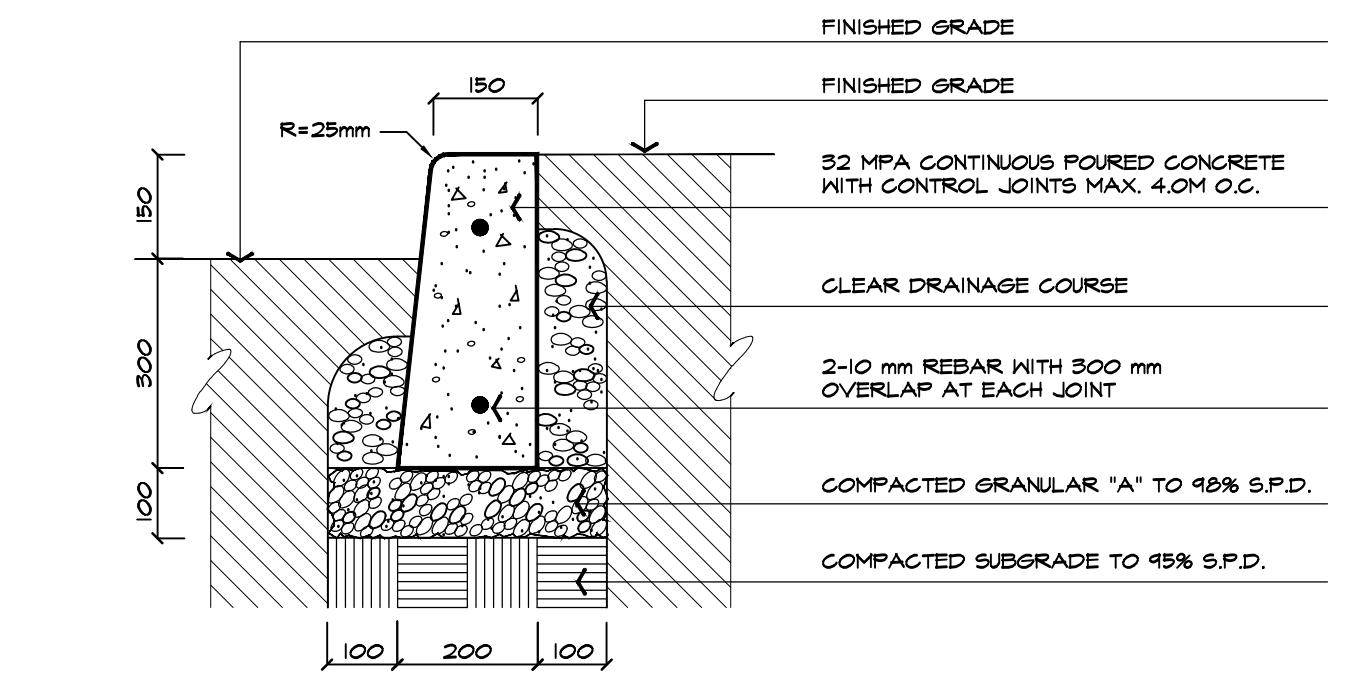
direction	project no.
	3523

sheet no.
D-1

*NOTED SCALE IS APPLICABLE ONLY WHEN PRINTED ON ARCH D (24"x36") SIZE SHEET



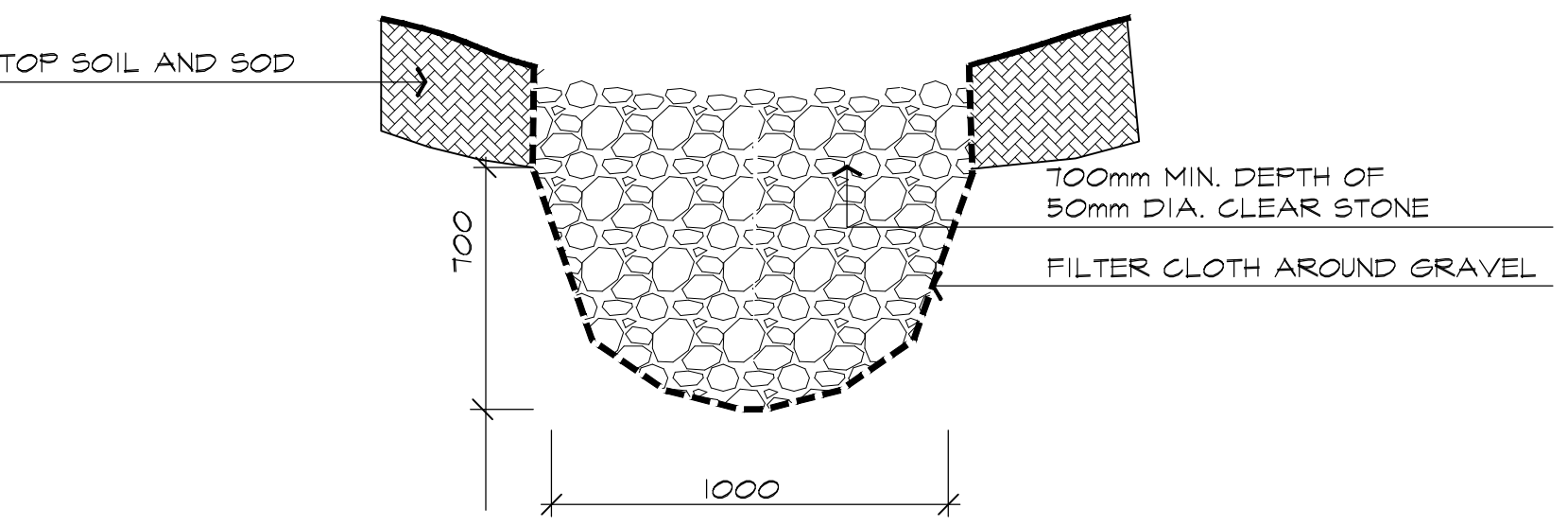
2 CANADA POST MAILBOX NTS
AS PER ENGINEER DWGS.



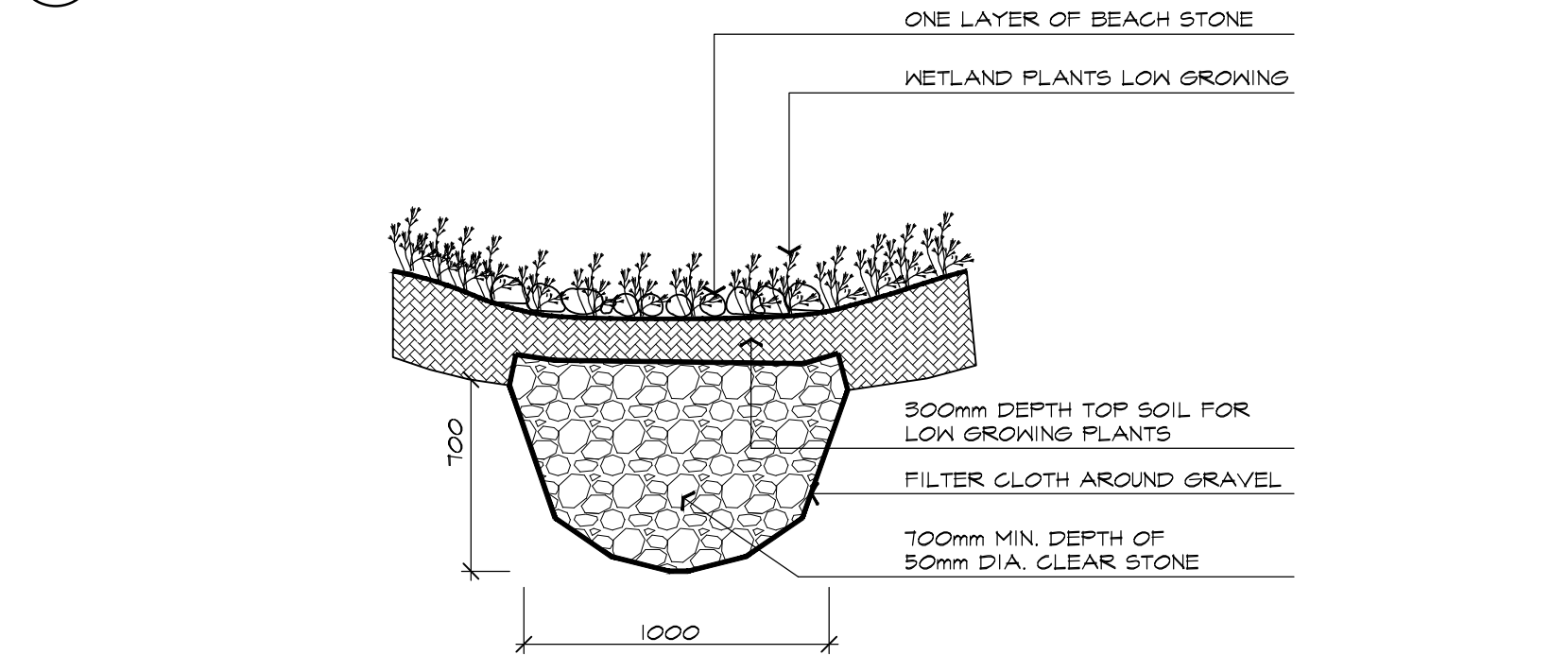
9 CONCRETE CURB DETAIL NTS
ABAL H101-440315



5 BENCH NTS
MODEL: P.S 682-AL-EK-EK-SP-BD-T4
MANUFACTURER: HAUSER SITE FURNITURE (800-268-1528 -TRUDY WALKER)
PRODUCT: KINGS HILL ARC BENCH WITH ENVIRO WOOD SLATS
SIZE: 188.0cm X 56.5cm X 74.4cm
SEAT HEIGHT: 45.1cm
COLOUR: WALNUT
OTHER: GUNMETAL POWDER COAT FINISH
NOTE: OPTIONAL SKATEBOARD DEFLECTOR
OR APPROVED EQUAL



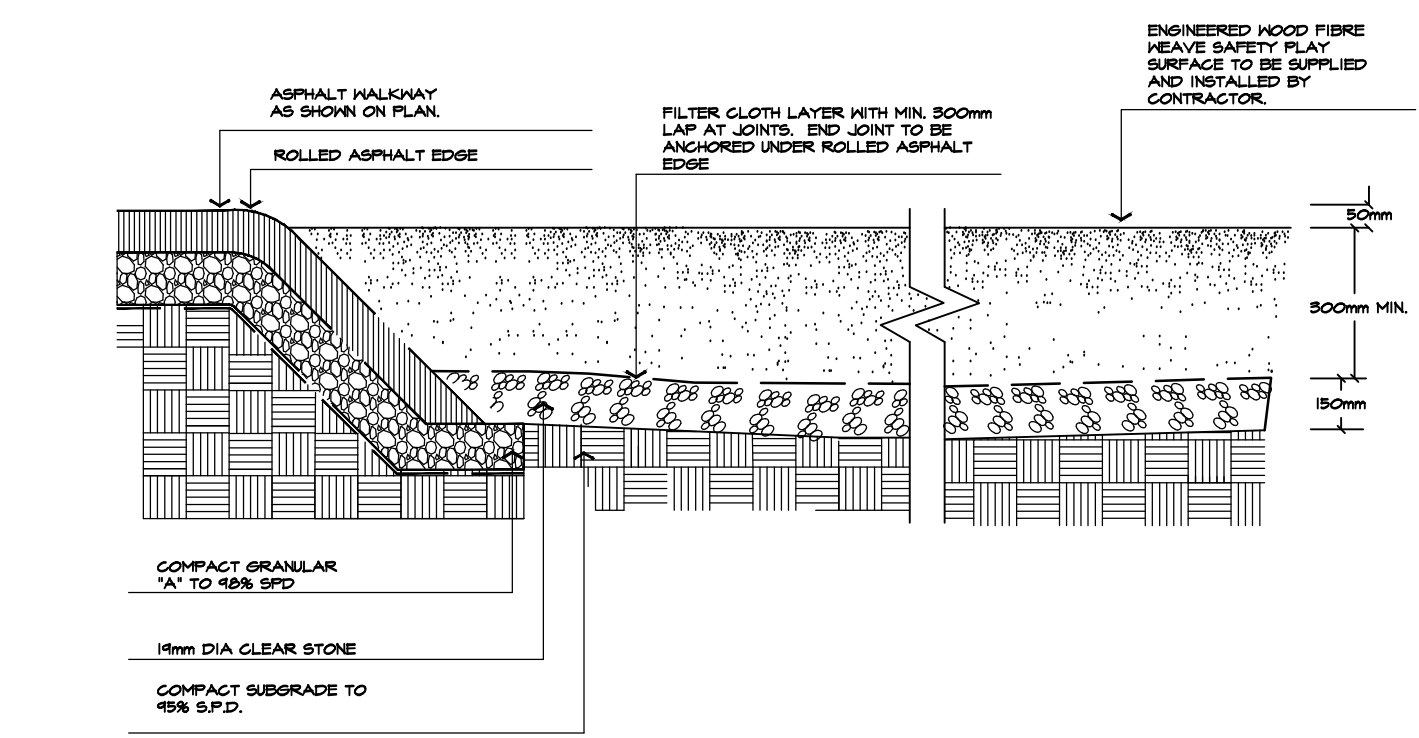
6 SWALE DETAIL NTS
TYPICAL INSTALLATION



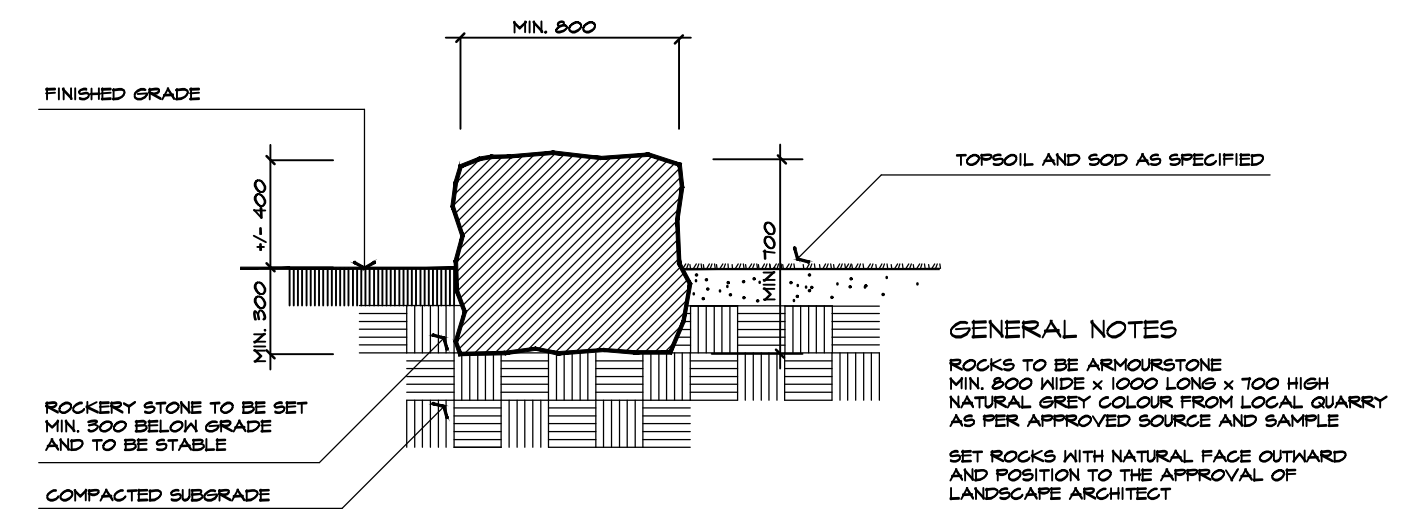
7 BIOSWALE DETAIL NTS



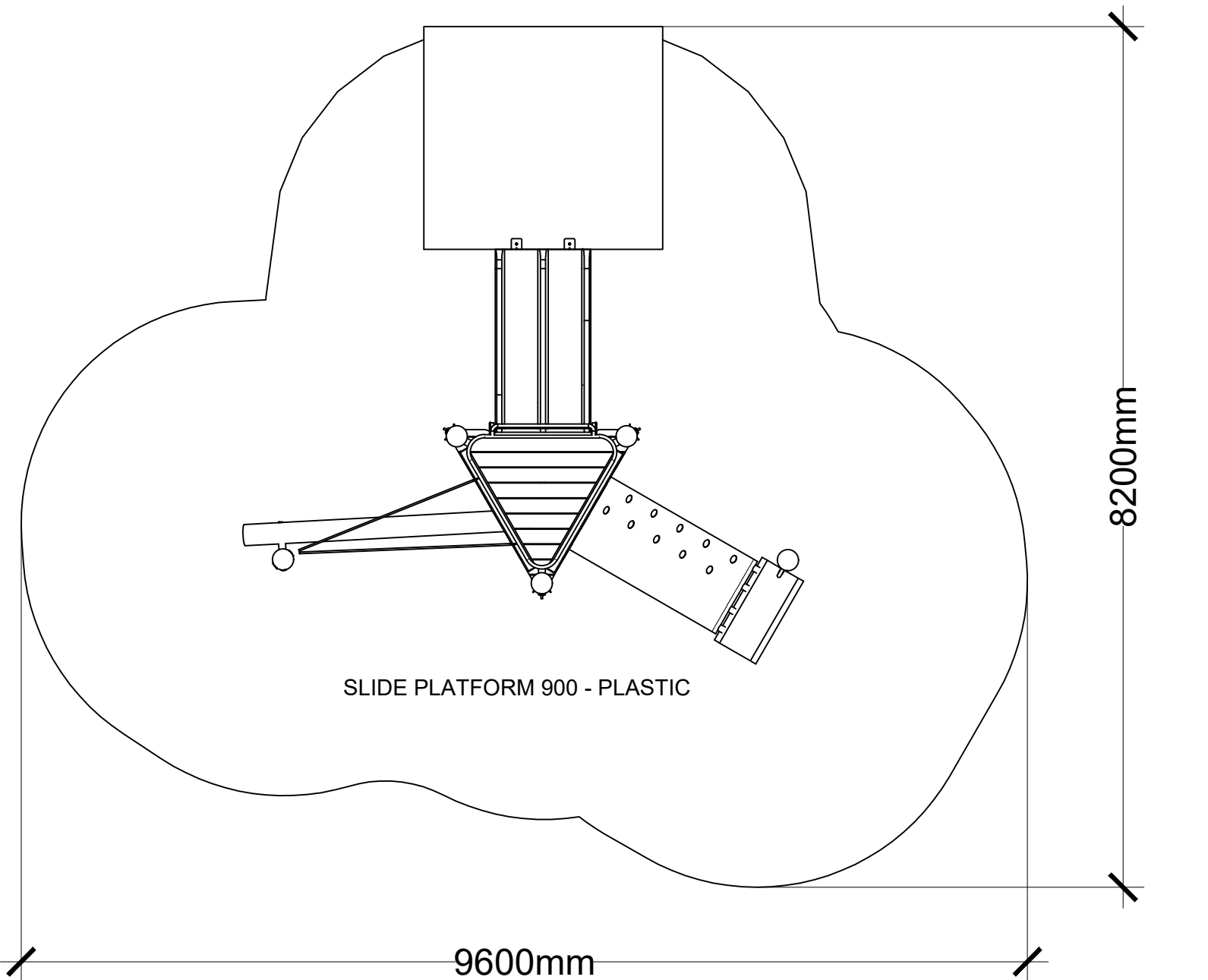
1 BIKE RACK NTS
MAGLIN 350 SERIES BIKE RACK (3 RINGS)



2 FIBRE WEAVE SAFETY SURFACE NTS
ABAL G105040417



3 ROCKERY STONE DETAIL NTS
SINGLE TIER AT GRADE
ABAL R201-450917



4 PLAY EQUIPMENT NTS
EARTHSCAPE "SLIDE PLATFORM 900"(PLASTIC SLIDE)
PLAYGROUND TO COMPLY WITH CITED STANDARDS

no.	date	version	by
4.	DEC 5 2023	ISSUED FOR SUBMISSION	L/E /E K
3.	OCT 12 2023	ISSUED FOR SUBMISSION	L/E /EK
2.	AUG 1 2023	ISSUED FOR SUBMISSION	L/E /EK
1.	DEC 5 2022	ISSUED FOR SUBMISSION	KM /EK
0.	OCT.22 2021	ISSUED FOR CLIENT REVIEW	NH

All information herein to be checked and verified at the site and any discrepancies must be reported to and clarified by the landscape architect before commencing work. All drawings, specifications, details, digital information, etc., prepared by the landscape architect are instruments of service and as such are his property and must be returned at his request.

ALEXANDER BUDREVICS & ASSOCIATES LIMITED
LANDSCAPE ARCHITECTS
895 Don Mills Road, Second Tower, Suite 212
Toronto, Ontario, Canada, M3C 1W3
416.444.5201
416.444.5208
www.budrevics.com

project
**11589 HIGHWAY 26
CRANBERRY MARSH ESTATES**
HIGHWAY 26
TOWN OF COLLINGWOOD
CRANBERRY MARSH ESTATES

drawing
LANDSCAPE DETAILS

date	OCT 20, 2021	drawn	NH
scale*	AS SHOWN	file	3523 D2 V4-231012
direction		project no.	3523
		sheet no.	D-2

*NOTED SCALE IS APPLICABLE ONLY WHEN PRINTED ON ARCH D (34"x36") SIZE SHEET